



# INSTALLATION INSTRUCTIONS

Accessory

ENGINE BAR  
P/N 08P70-MGC-JB0  
08P70-MGC-JD0

Application

CB1100CA/NA

Publication No.

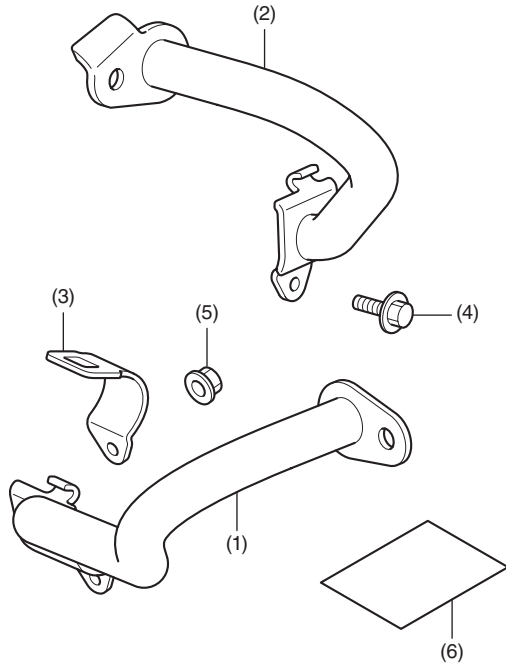
MII

Issue Date

December 2016

**Honda Dealer: Please give a copy of these instructions to your customer.**

## PARTS LIST



No.	Description	Qty
(1)	Right side engine bar	1
(2)	Left side engine bar	1
(3)	Lower holder	2
(4)	6 mm flange bolt	2
(5)	6 mm flange nut	2
(6)	URL paper	1

## TOOLS REQUIRED

- Socket (10 mm)
- Ratchet
- Box-end wrench (10 mm)
- Torque wrench

## TORQUE CHART

Tighten all screws, bolts, and nuts to their specified torque values. Refer to the Service Manual for the torque values of the removed parts.

Item	N·m	kgf·m	lbf·ft
6 mm flange bolt and nut	12	1.2	9

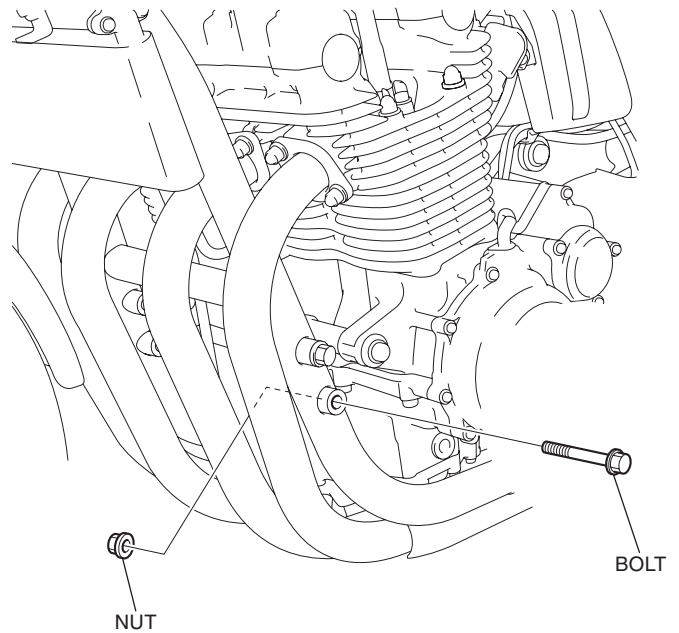
## INSTALLATION

### ▲ CAUTION

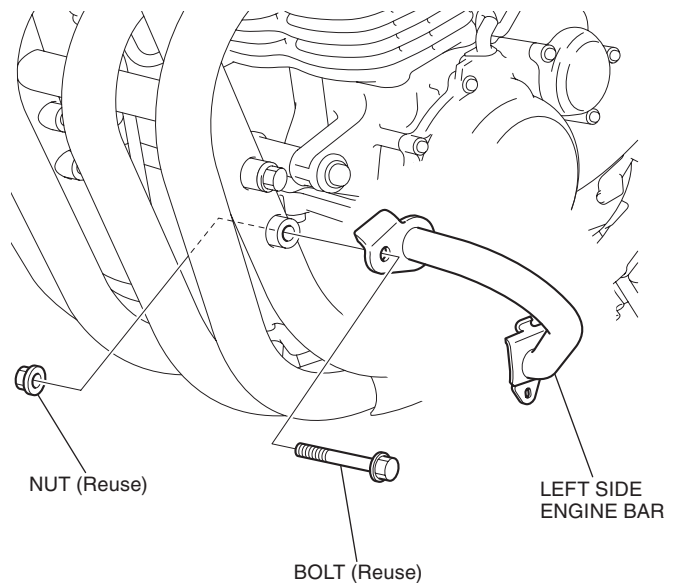
- To prevent burns, allow the engine, exhaust system, radiator, etc., to cool before installing the accessory.

1. Remove the parts as shown.

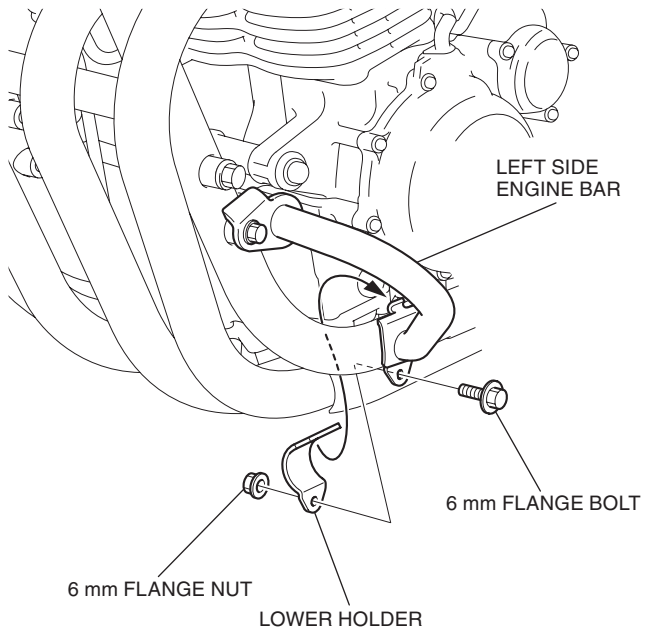
<Left side>



2. Loosely install the left side engine bar as shown.



3. Install the lower holder as shown.



4. Loosely install the right side engine bar in the same manner.
5. Install the lower holder to the right side engine bar in the same manner.
6. Tighten the provisionally inserted bolts taking care of the total balance.

