



INSTALLATION INSTRUCTIONS

Accessory

TOP BOX OPENER
P/N 08L76-MKT-D00

Application

ADV750

Publication No.

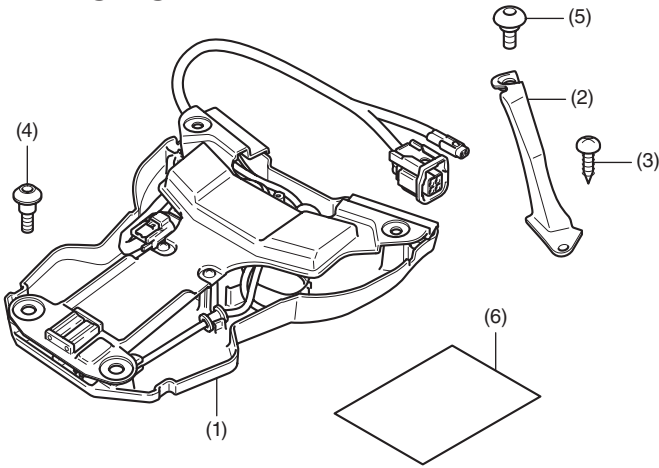
MII

Issue Date

December 2020

Honda Dealer: Please give a copy of these instructions to your customer.

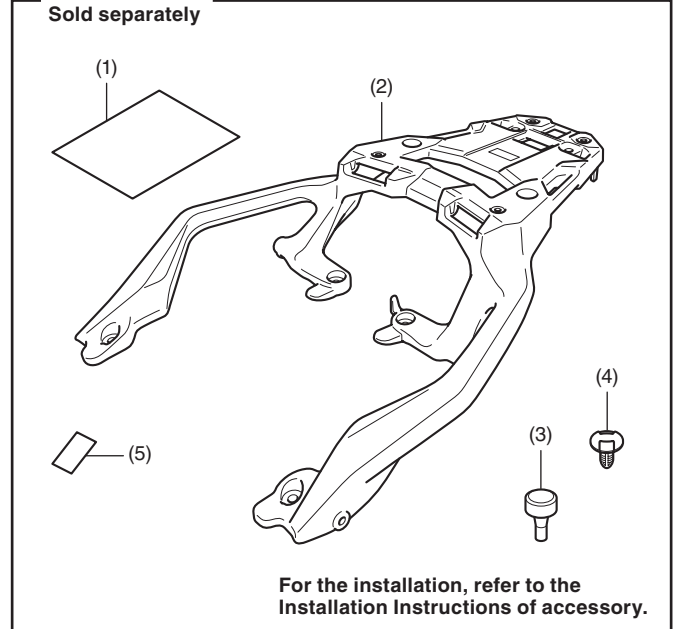
PARTS LIST



No.	Description	Qty
(1)	Lid opener	1
(2)	Harness cover	1
(3)	4 mm screw	1
(4)	5 mm screw (long)	4
(5)	5 mm screw (short)	1
(6)	URL paper	1

REAR CARRIER

Sold separately



No.	Description	Qty
(1)	URL paper	1
(2)	Rear carrier	1
(3)	Stopper rubber (Not used.)	4
(4)	Clip	4
(5)	Protector film	2

- Stopper rubber should be used when installing the top box (other than SMART).
- Do not used stopper rubber when installing the top box (SMART).

TOOLS REQUIRED

Hex wrench (5 mm)
Phillips® screwdriver
Torque wrench

TORQUE CHART

Tighten all screws, bolts, and nuts to their specified torque values. Refer to the Service Manual for the torque values of the removed parts.

Item	N·m	kgf·m	lbf·ft
4 mm screw	1	0.1	0.7
5 mm screw	4.2	0.4	3.1

MAXIMUM LOADING CAPACITY

- The weight of the cargo must not exceed the following maximum loading capacity:

Maximum Loading Capacity	
Rear carrier	10 kg (22 lb)

INSTALLATION

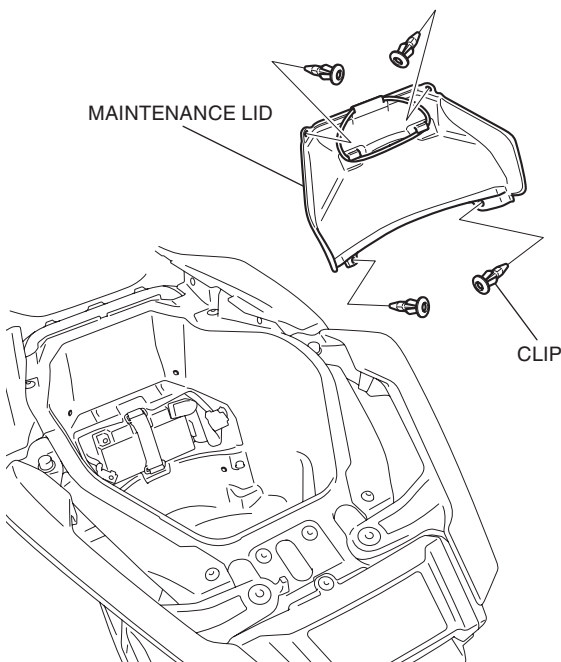
⚠ CAUTION

- To prevent burns, allow the engine, exhaust system, radiator, etc., to cool before installing the accessory.

NOTE:

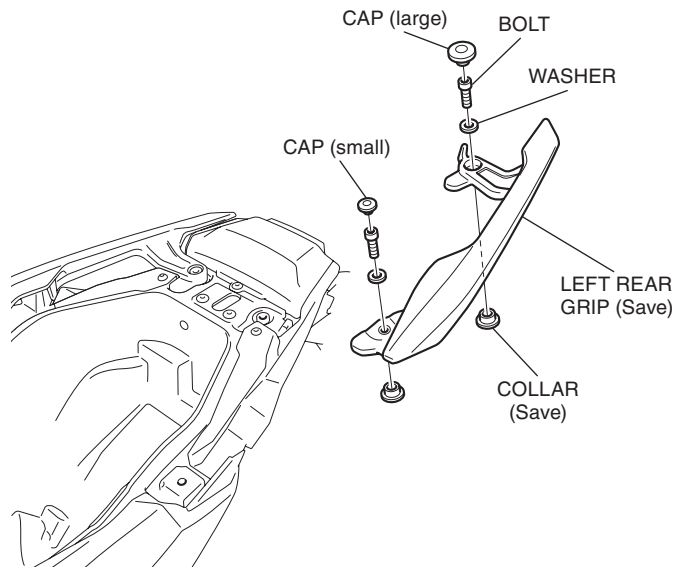
- Disconnect the negative (-) cable from the battery before installing this accessory.
- The memories of the clock will be erased when you disconnect the battery. Reset the memories after reconnecting the battery.
- Reinstall the removed parts on the motorcycle and make sure that the wires and harnesses are not pinched.

1. Open the seat.
2. Remove the maintenance lid as shown, and disconnect the negative (-) cable of the battery.

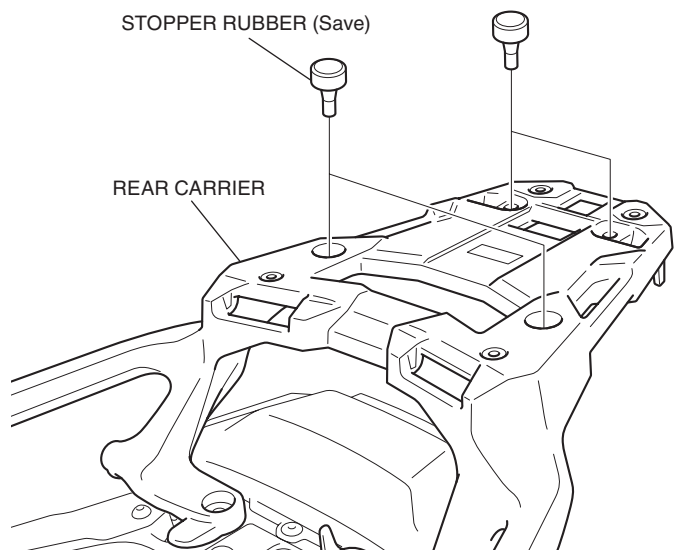


3. Remove the left rear grip as shown.
 - Repeat on the right side.

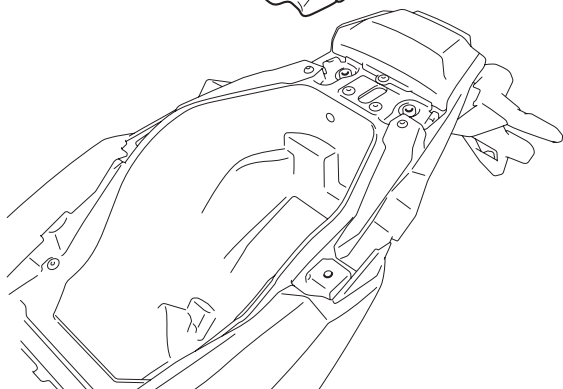
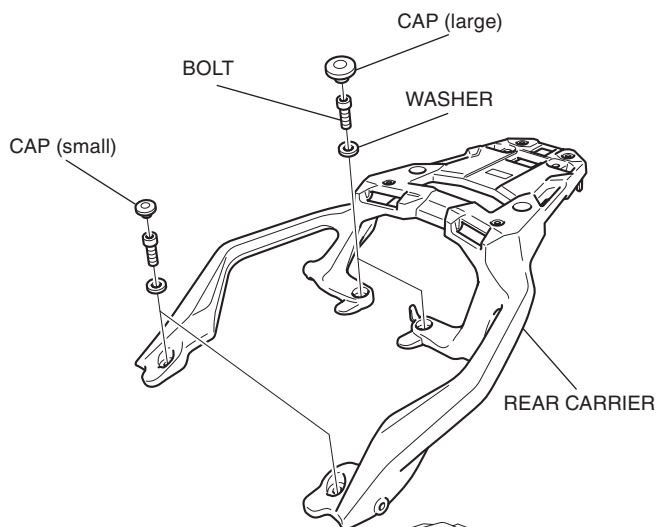
<Left side>



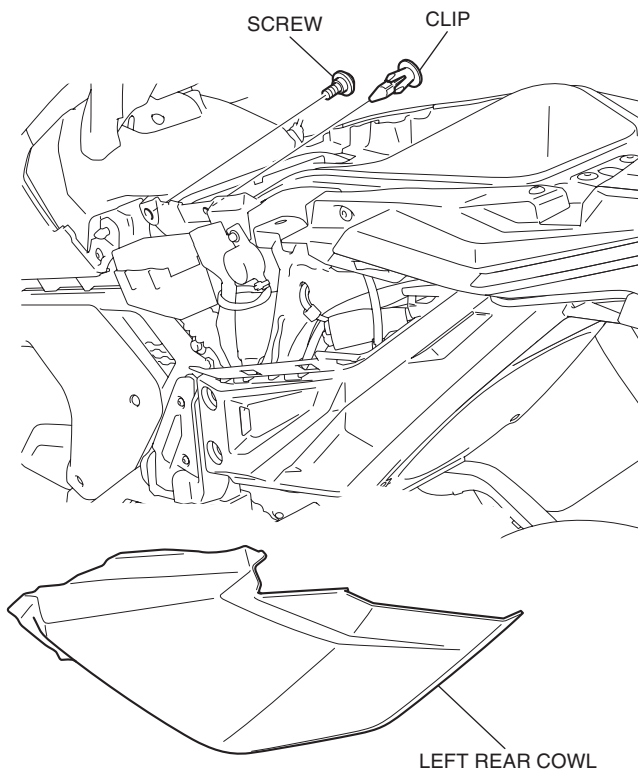
4. Remove the stopper rubbers as shown.
 - Perform this step for the motorcycle equipped with the rear carrier.



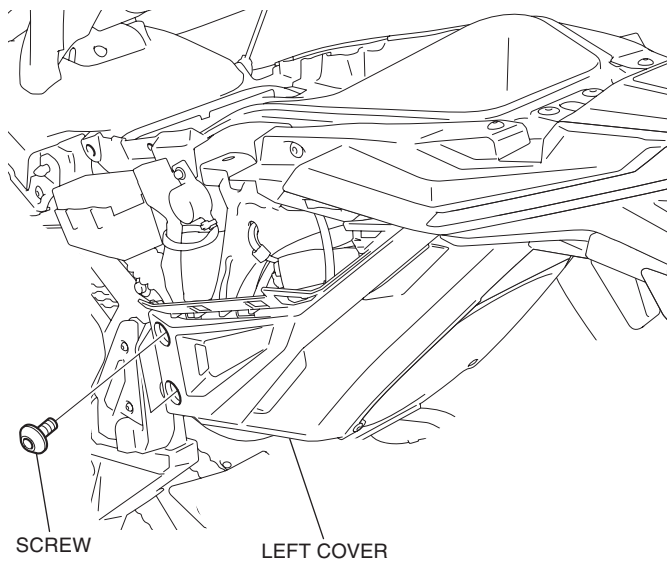
5. Remove the rear carrier as shown.
- Perform this step for the motorcycle equipped with the rear carrier.



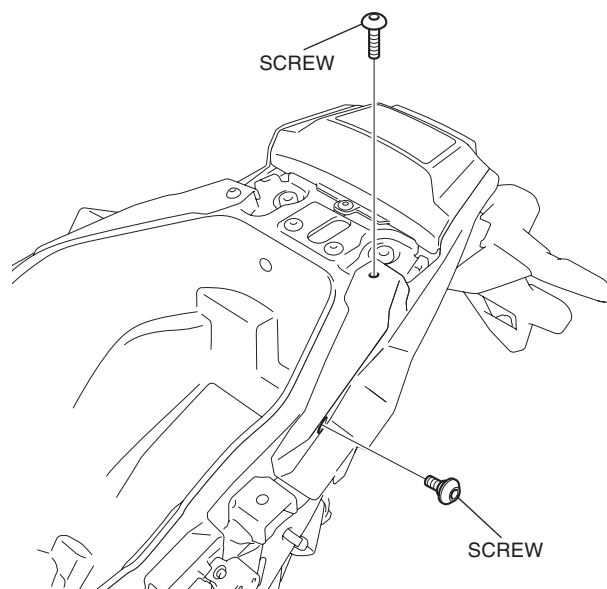
6. Remove the left rear cowl as shown.
<Left side>



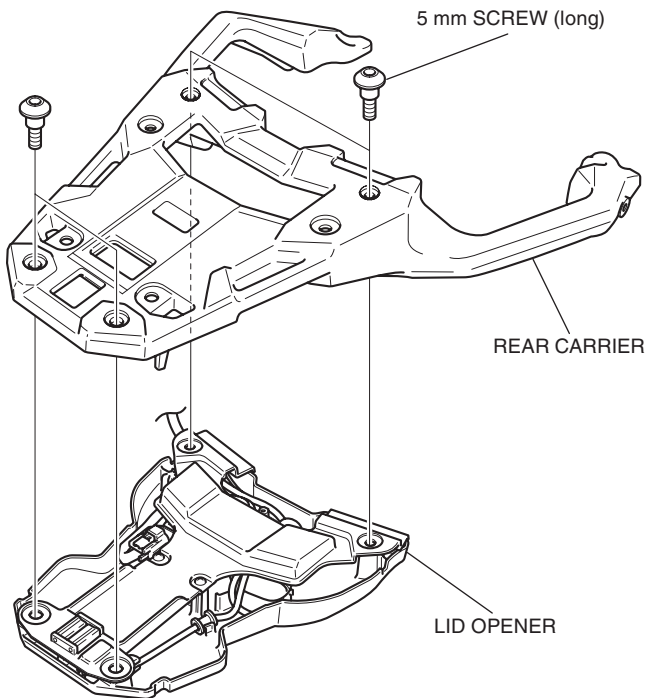
7. Remove the screws as shown.



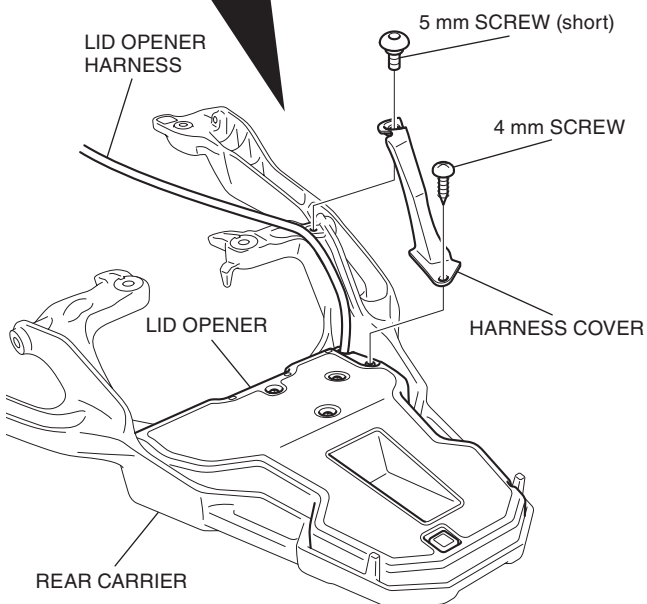
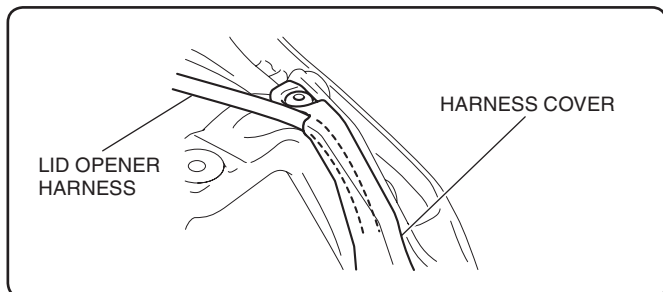
8. Remove the screws as shown.



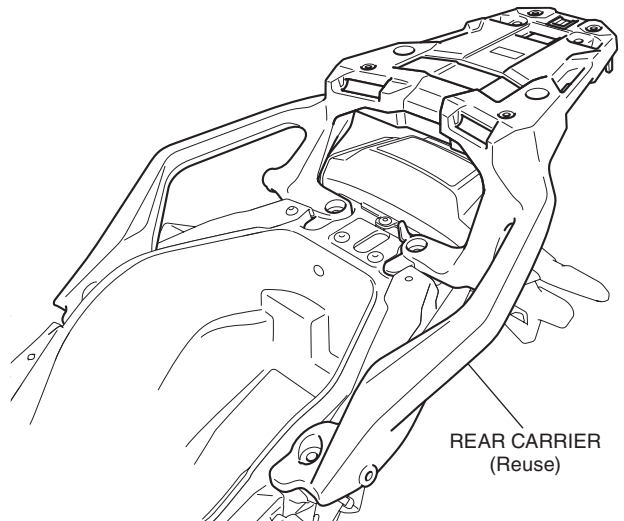
9. Install the lid opener as shown.
- Confirm that any wire harness is not caught or too tight.



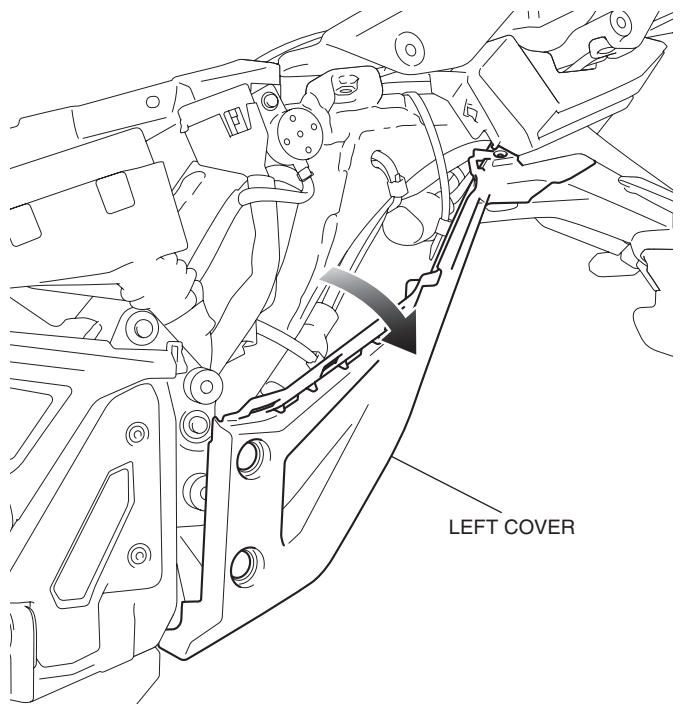
10. Turn over the rear carrier and install the harness cover as shown.
- Confirm that any wire harness is not caught or too tight.



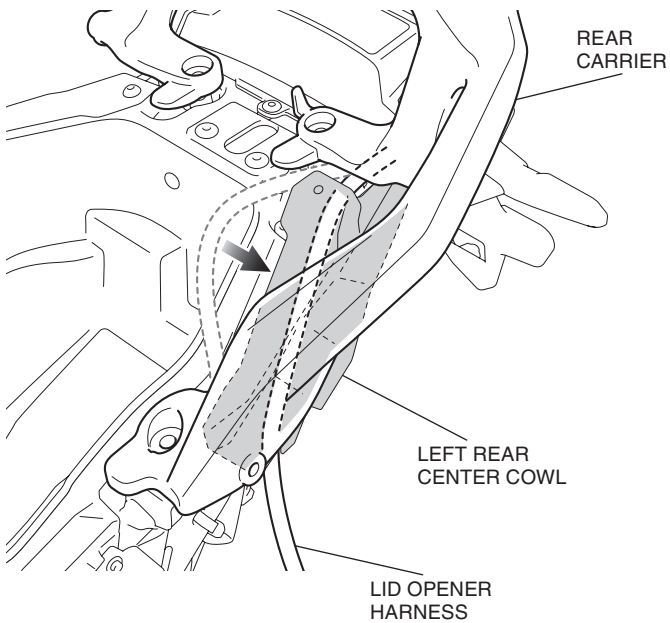
11. Place the rear carrier as shown.



12. Pull the left cover as shown.
<Left side>

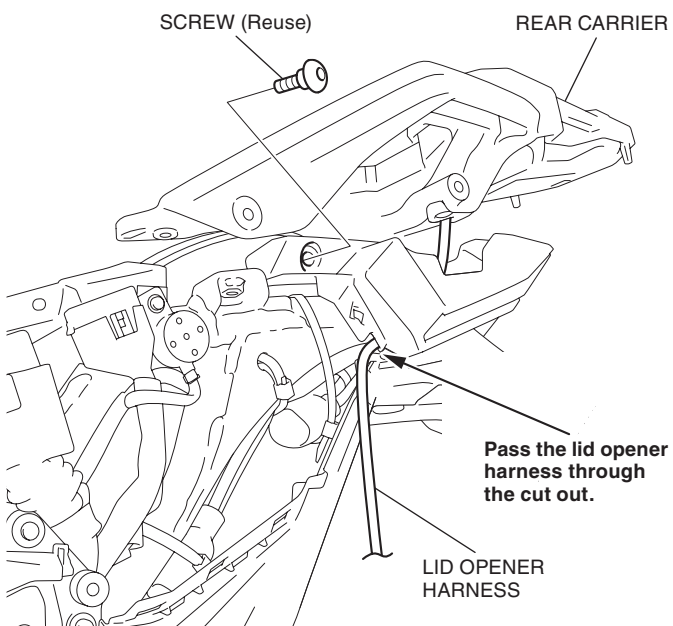


13. Route the lid opener harness as shown.
- Route through the gap in the left rear center cowl.

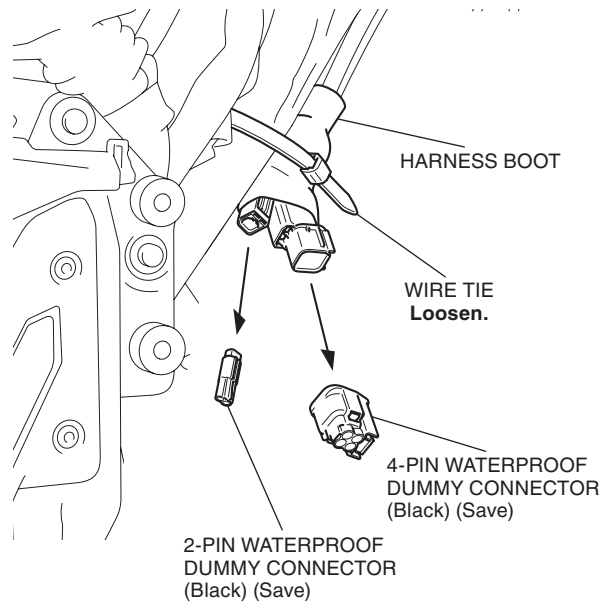


14. After route the lid opener harness, install the screw as shown.

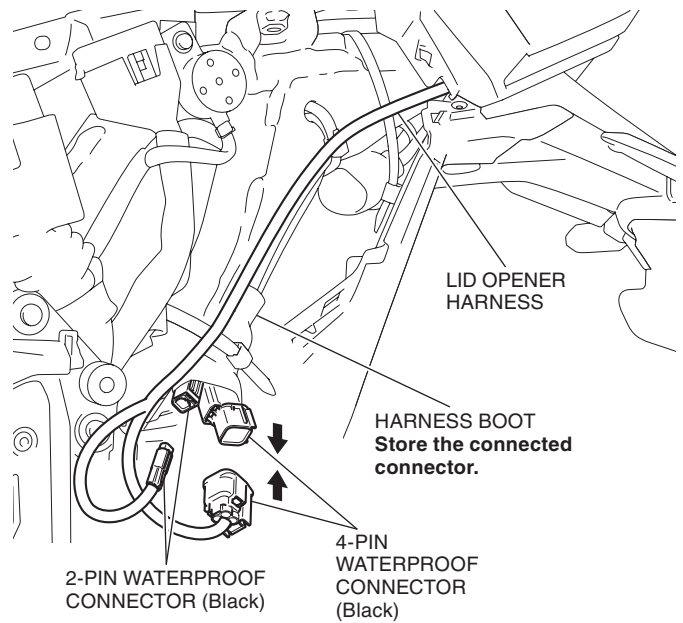
<Left side>



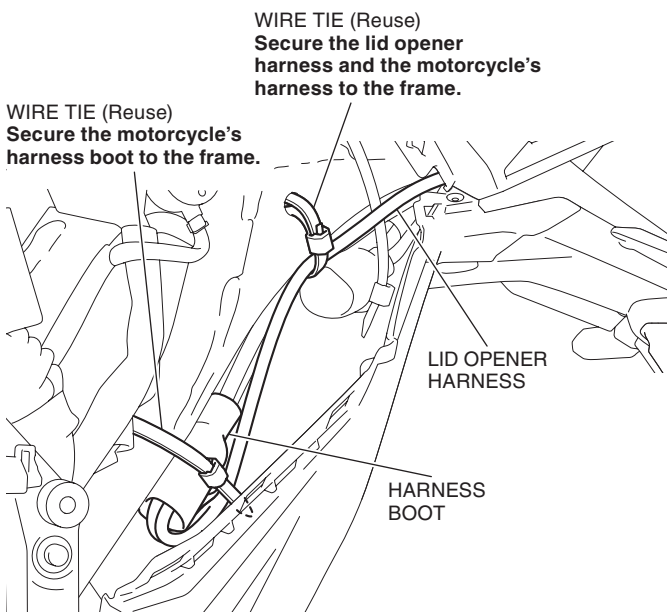
15. Remove the dummy connectors as shown.



16. Connect the lid opener harness as shown.



17. Secure the lid opener harness with the wire tie as shown.



18. Install the motorcycle's parts in the reverse order of removal.
 - **Confirm that any wire harness is not caught or too tight.**
19. Perform the step 3 to 7 and 9 on the Rear carrier (sold separately) installation instructions.
20. Refer to the Genuine Accessory User's Guide that comes together with the top box, and install the top box according to the instruction.
21. Check the lid opener, headlight and the other lights for proper operation.