



INSTALLATION INSTRUCTIONS

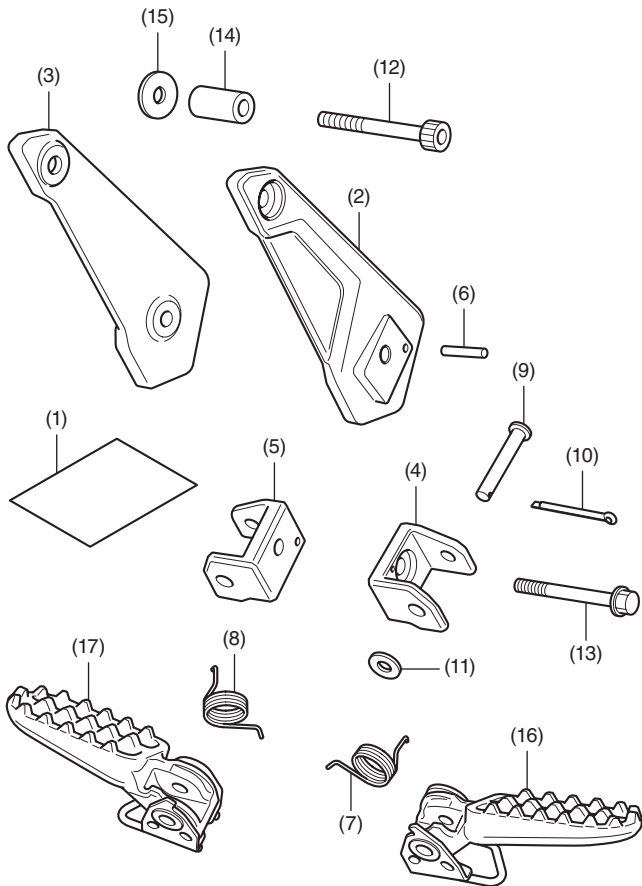
Accessory
RIDER STEP
P/N 08R72-MKT-D00

Application
ADV750

Publication No.
MII
Issue Date
November 2020

Honda Dealer: Please give a copy of these instructions to your customer.

PARTS LIST



No.	Description	Qty
(1)	URL paper	1
(2)	Right step holder	1
(3)	Left step holder	1
(4)	Right step bracket	1
(5)	Left step bracket	1
(6)	Spring pin	2
(7)	Right step return spring	1
(8)	Left step return spring	1
(9)	Joint pin	2
(10)	Split pin	2
(11)	Washer (small)	2
(12)	8 mm socket bolt	2
(13)	8 mm flange bolt	2
(14)	Collar	4
(15)	Washer (large)	2
(16)	Right step arm	1
(17)	Left step arm	1

TOOLS AND SUPPLIES REQUIRED

- Socket (12 mm)
- Ratchet
- Hex wrench (8 mm)
- Hammer
- Scale
- Long nose pliers
- Grease
- Torque wrench

TORQUE CHART

Tighten all screws, bolts, and nuts to their specified torque values. Refer to the Service Manual for the torque values of the removed parts.

Item	N·m	kgf·m	lbf·ft
8 mm flange bolt	32	6	24
8 mm socket bolt	32	6	24

INSTALLATION

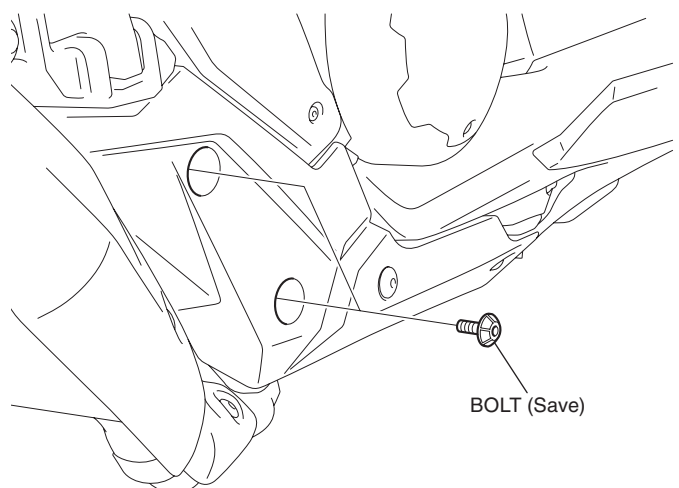
▲ CAUTION

- To prevent burns, allow the engine, exhaust system, radiator, etc., to cool before installing the accessory.

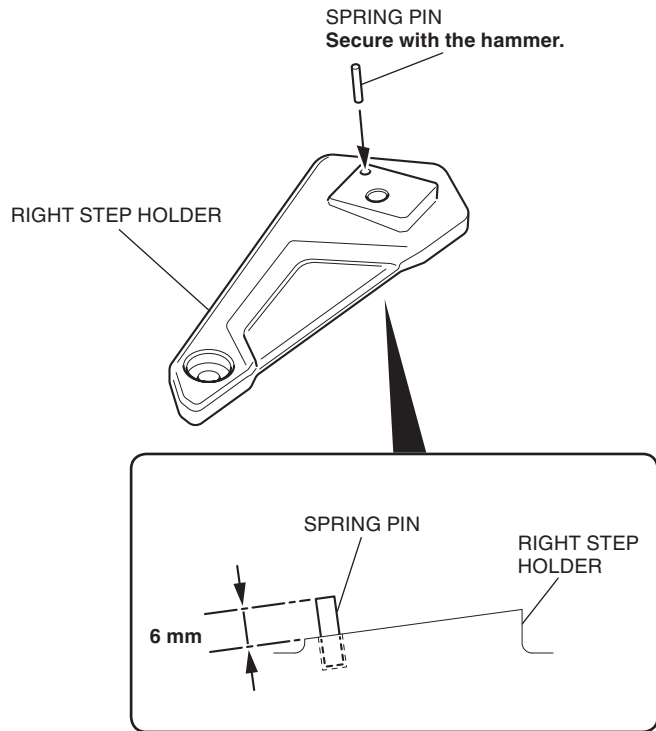
1. Remove the bolts as shown.

- Repeat on the left side.

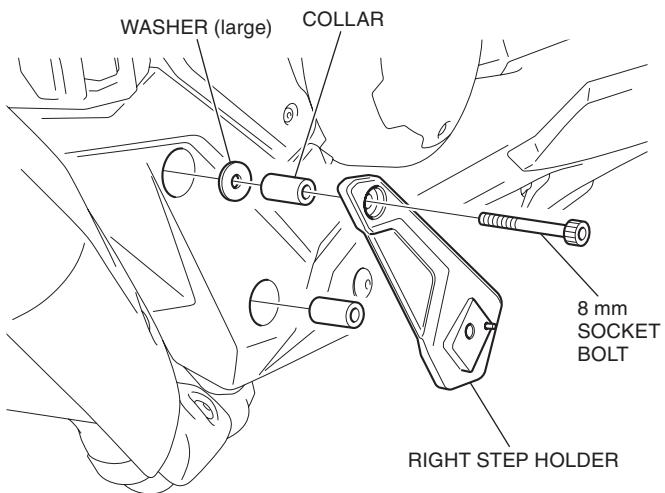
<Right side>



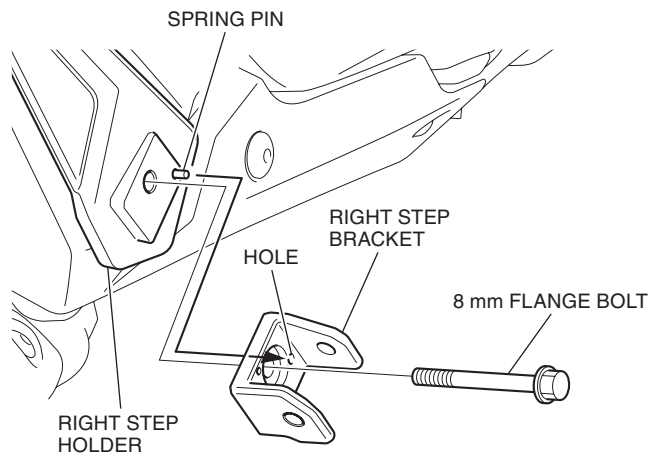
2. Insert the spring pin as shown.



3. Loosely install the right step holder as shown.

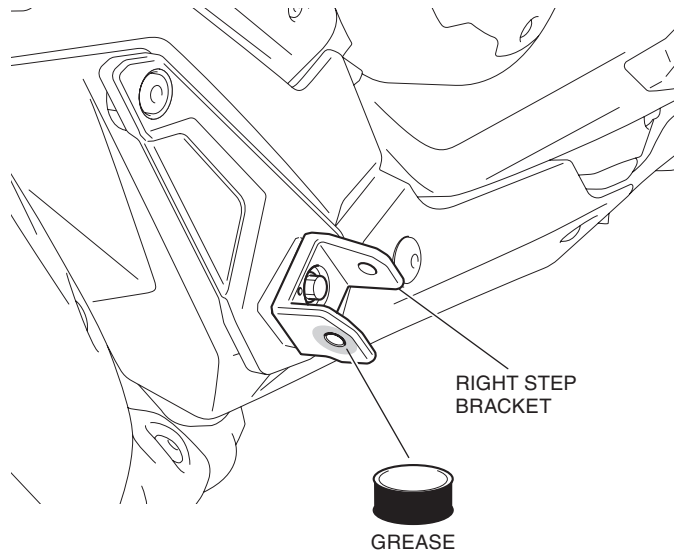


4. Loosely install the right step bracket as shown.

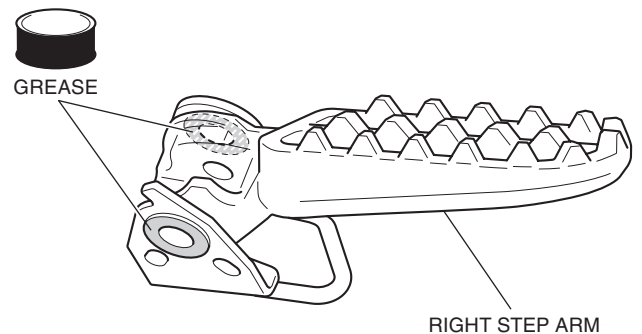


5. Tighten all the loosely installed bolts securely.

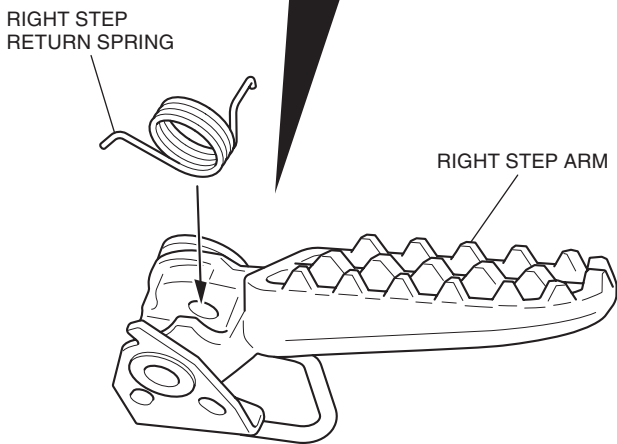
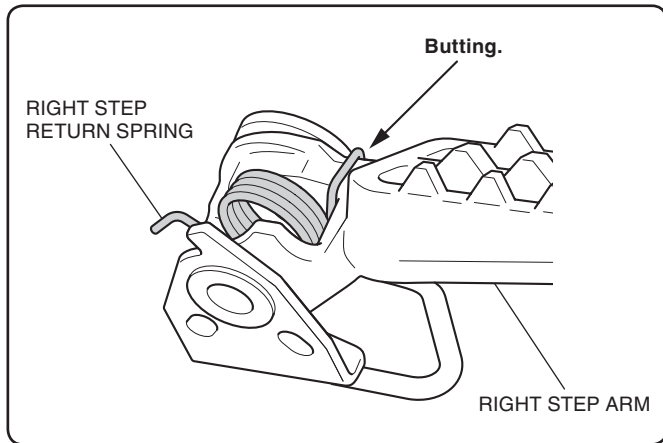
6. Apply grease to the position shown.



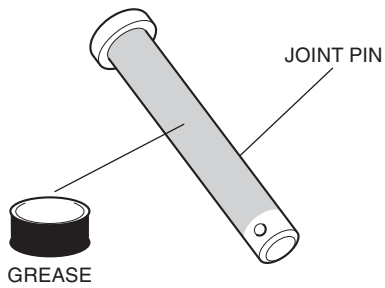
7. Apply grease to the positions shown.



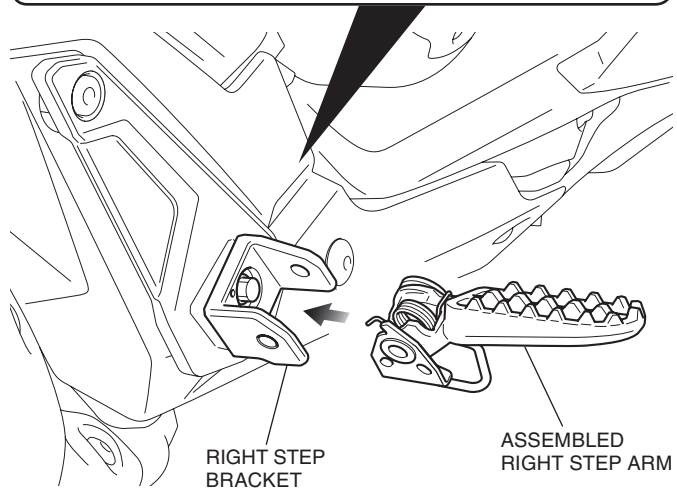
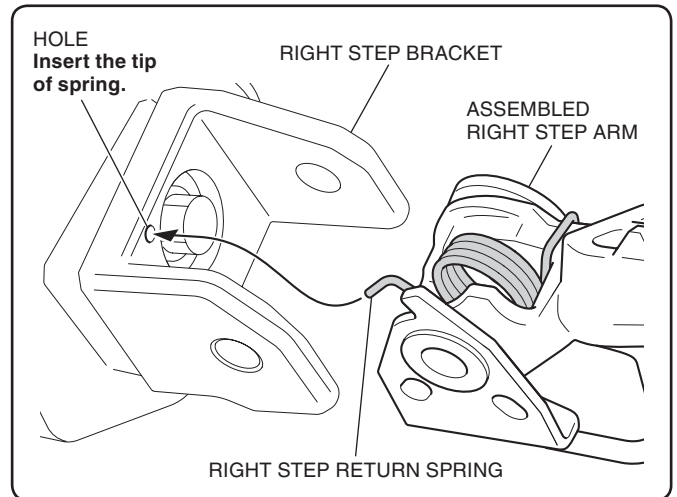
8. Install the right step return spring as shown.



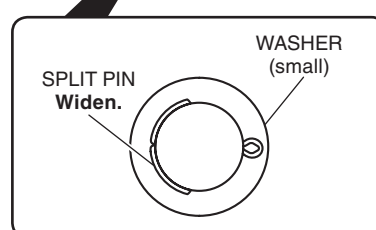
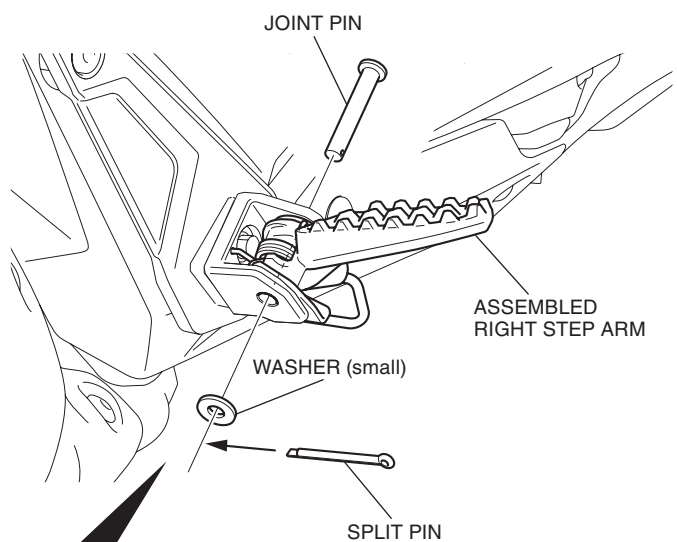
9. Apply grease to the joint pin as shown.



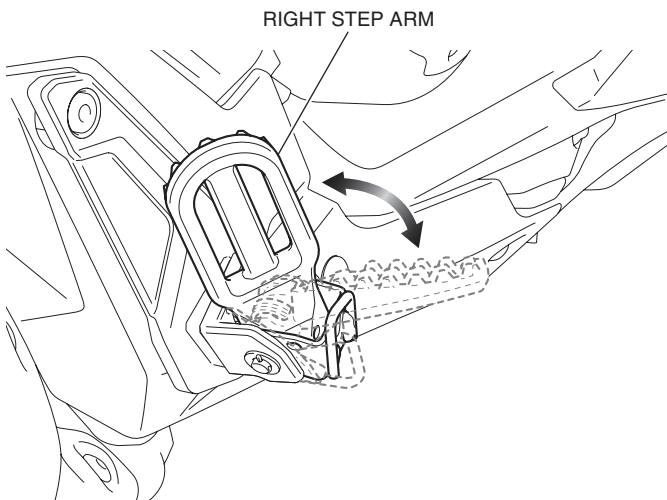
10. Install the assembled right step arm as shown.



11. Install the joint pin and split pin as shown.



12. Check that the right step arm operates smoothly.



13. Install the left step holder, left step bracket and left step arm in the same manner as right side.

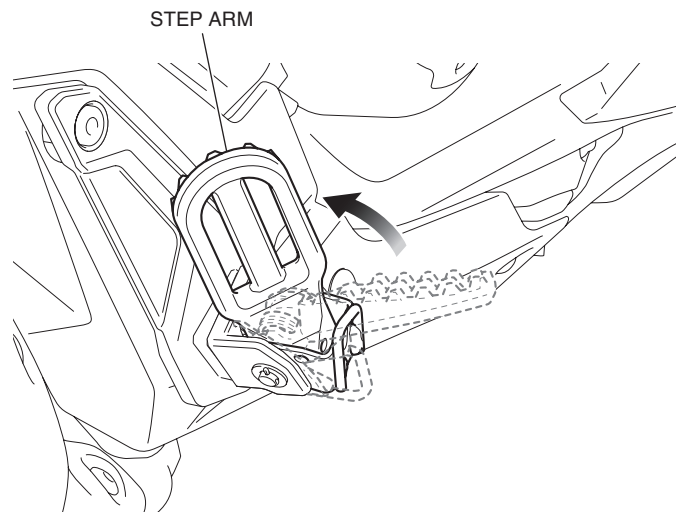
14. Check that the step arm can be secured.

- Refer to the “How to Secure the Step arm”.

How to Secure the Step arm

- The step arm can be secured with the arm raised.

1. Raise the step arm until it stops.



2. Lower the click lever.

