

HONDA

INSTALLATION INSTRUCTIONS

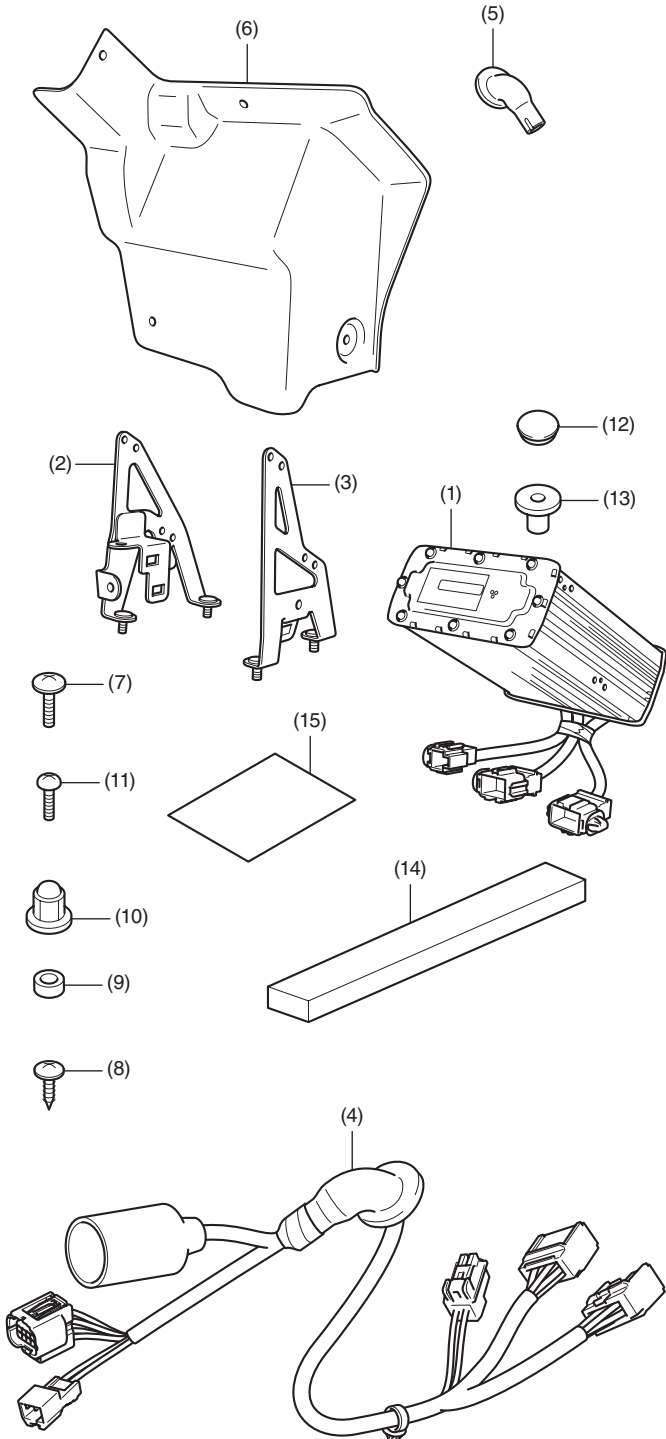
Accessory
POWER AMP & ATTACHMENT
P/N 08A70-MKC-L00

Application
GL1800B/BD

Publication No.
MII
 Issue Date
January 2021

Honda Dealer: Please give a copy of these instructions to your customer.

PARTS LIST



No.	Description	Qty
(1)	Amplifier unit	1
(2)	Stay A	1
(3)	Stay B	1
(4)	Sub harness	1
(5)	Grommet	3
(6)	Cover	1
(7)	5 mm screw (long)	4
(8)	5 mm screw (short)	2
(9)	Collar	9
(10)	5 mm nut	5
(11)	4 mm screw	9
(12)	Hole plug	1
(13)	Well nut	1
(14)	Sponge seal rubber	1
(15)	Installation Instructions URL	1

TOOLS AND SUPPLIES REQUIRED

Box-end wrench (8 mm)
 Open-end wrench (8 mm)
 Phillips ® screwdriver
 Synthetic detergent solution
 (Water : Synthetic detergent / 100 : 1)
 Nippers
 Electric drill
 Drill bit (4, 6 and 10 mm mm)
 Hole saw (30 mm)
 Scale
 Scissors
 File
 Isopropyl alcohol
 Shop towel
 Torque wrench

TORQUE CHART

Tighten all screws, bolts, and nuts to their specified torque values. Refer to the Service Manual for the torque values of the removed parts.

Item	N-m	kgf-m	lbf-ft
4 mm screw	1	0.1	0.7
5 mm screw	4.2	0.4	3.1
5 mm nut	5.2	0.5	3.8

INSTALLATION

⚠ CAUTION

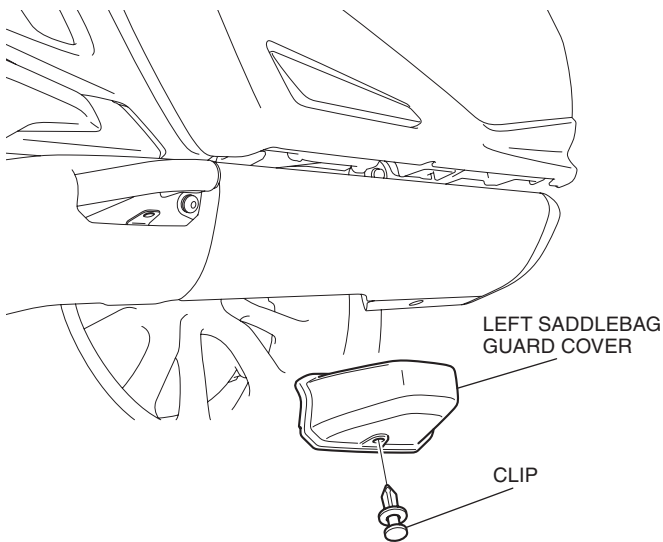
- To prevent burns, allow the engine, exhaust system, radiator, etc., to cool before installing the accessory.

NOTE:

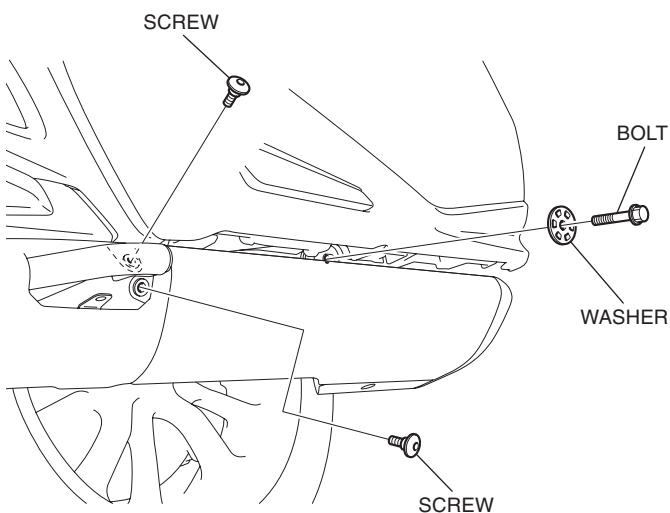
- Disconnect the negative (-) cable from the battery before installing this accessory.
- Heat the bonding surfaces with a hair dryer if the ambient air temperature is below 70°F (21°C).
- The adhesive reaches full strength in 72 hours. Wait at least 24 hours before riding your motorcycle.
- The memories of the clock will be erased when you disconnect the battery. Reset the memories after reconnecting the battery.
- Reinstall the removed parts on the motorcycle and make sure that the wires and harnesses are not pinched.

1. Remove the left saddlebag guard cover as shown.

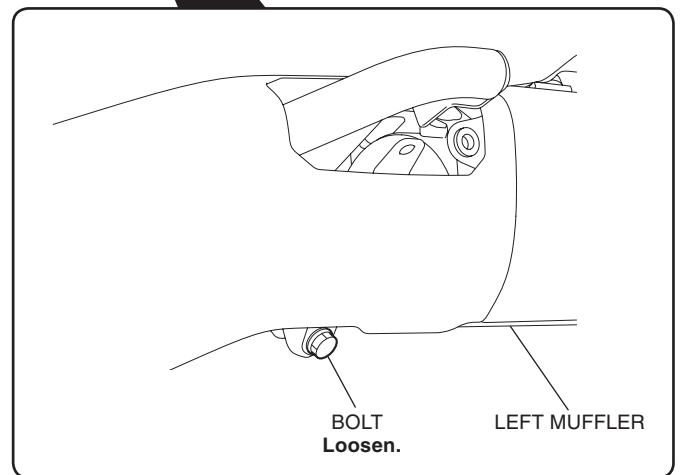
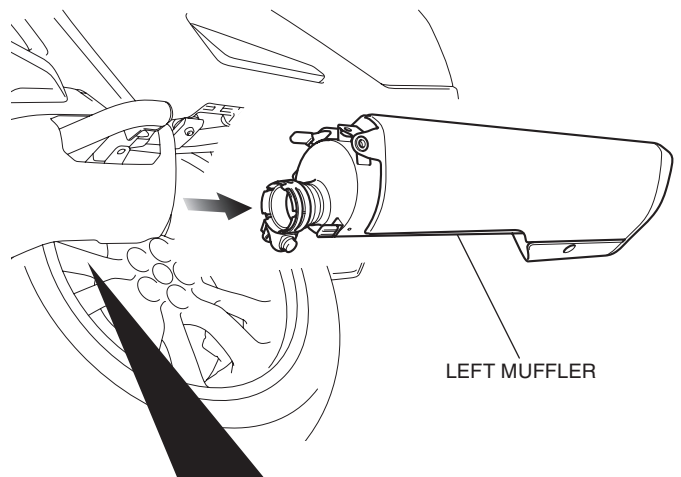
<Left side>



2. Remove the parts as shown.

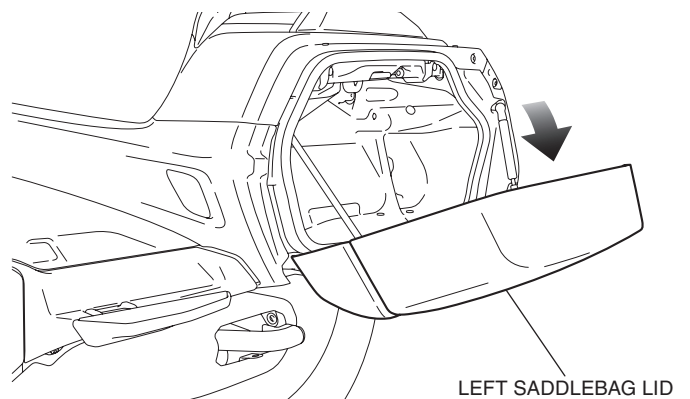


3. Loosen the bolt, then remove the left muffler as shown.

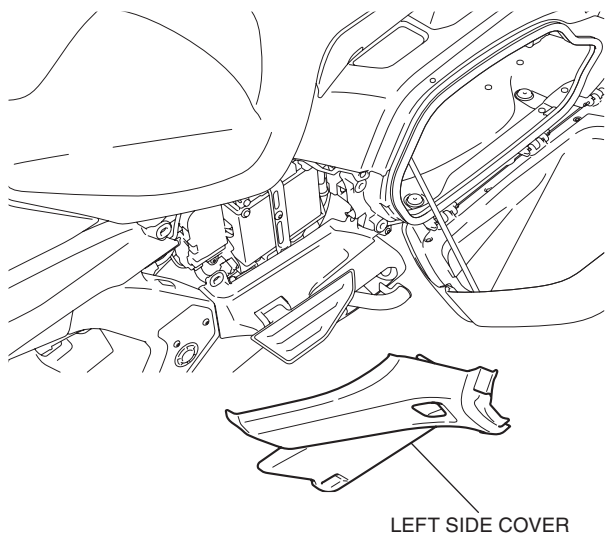


4. Open the left saddlebag lid as shown.

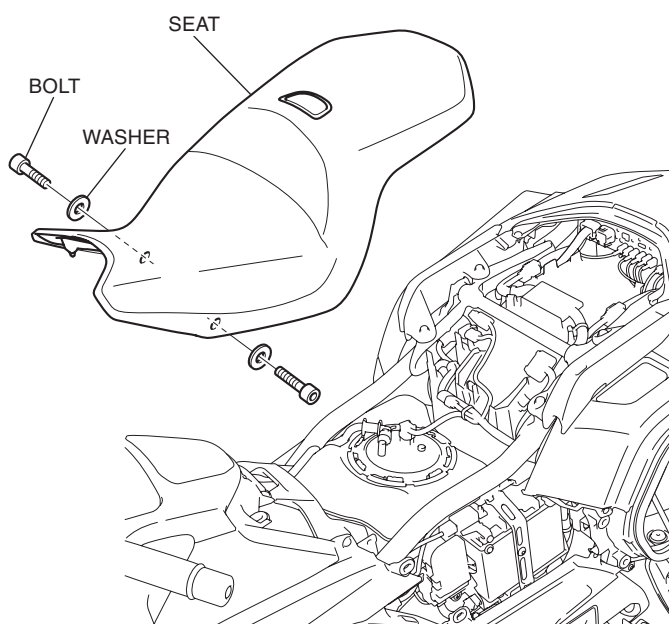
<Left side>



5. Remove the left side cover as shown, and disconnect the negative (-) cable of the battery.

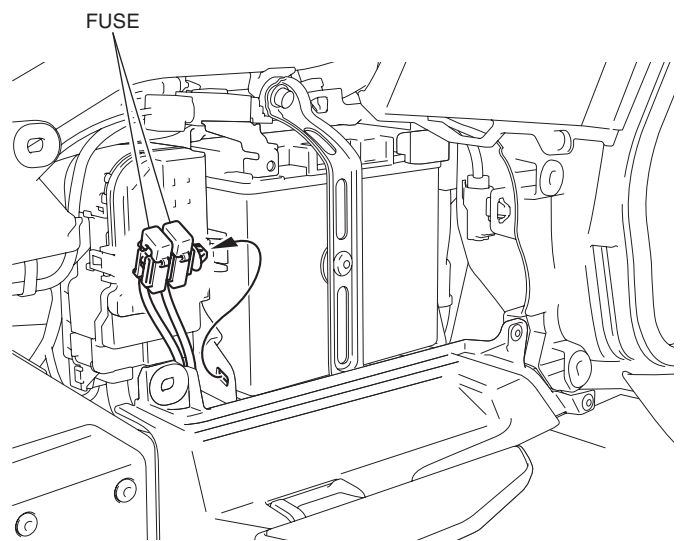


6. Remove the right side cover in the same manner as the left side.
7. Remove the seat as shown.

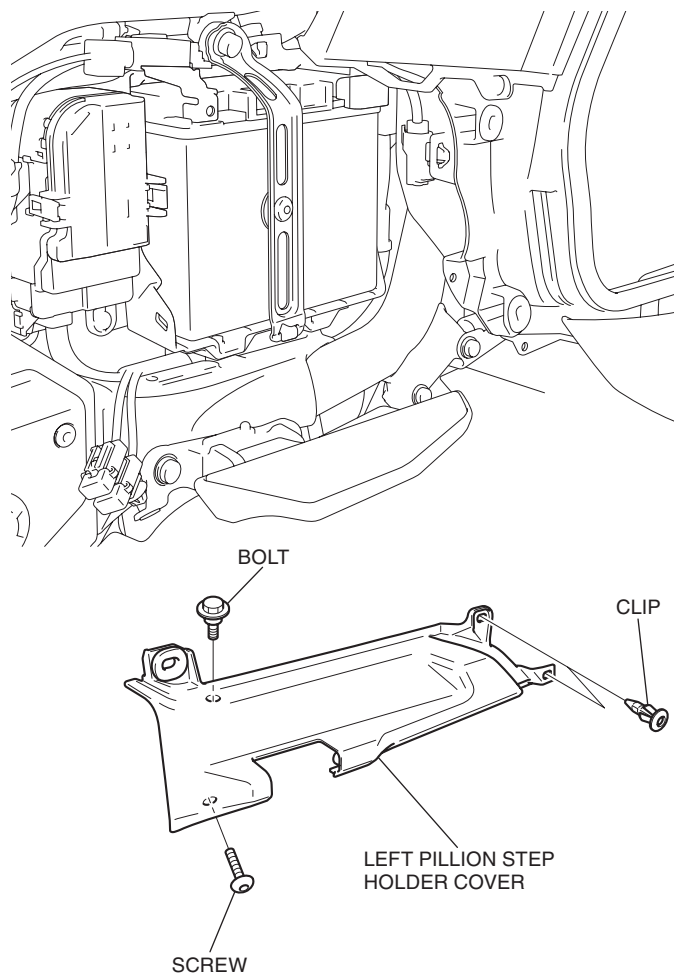


8. Remove the fuses as shown.

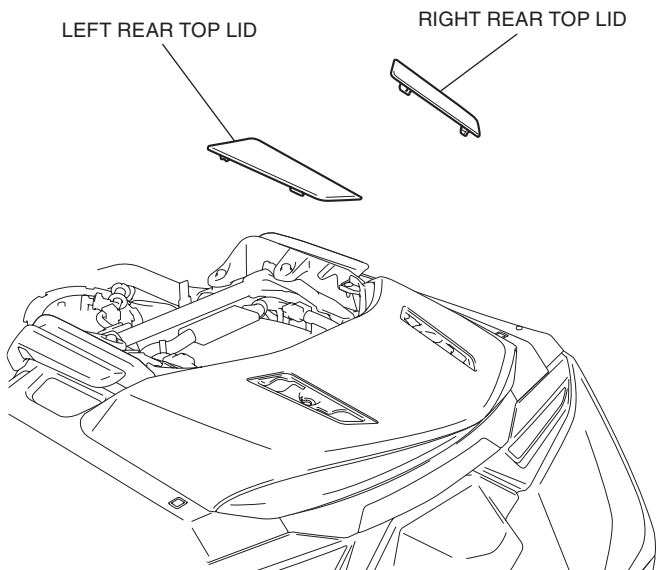
<Left side>



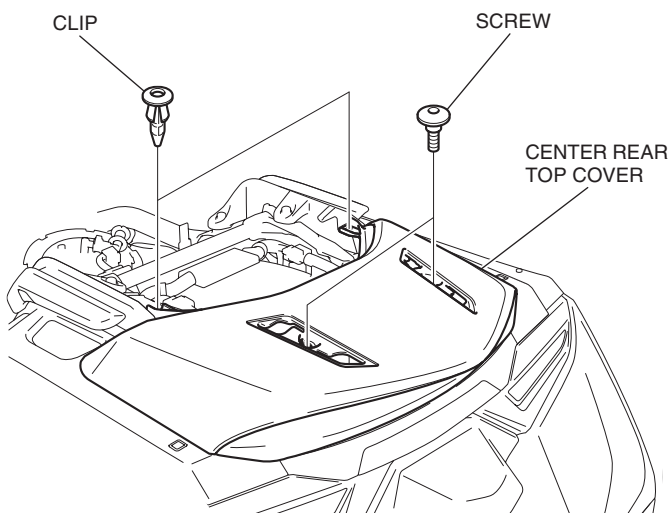
9. Remove the left pillion step holder cover as shown.



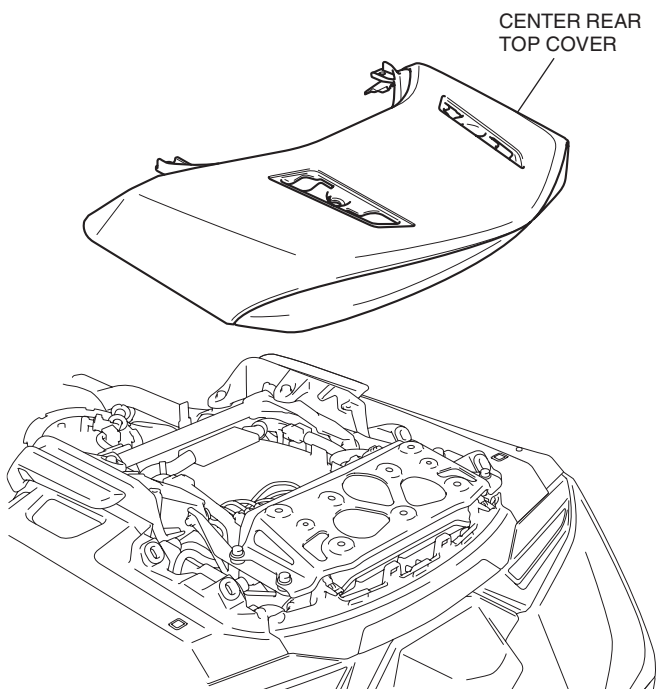
10. Remove the right and left rear top lid as shown.



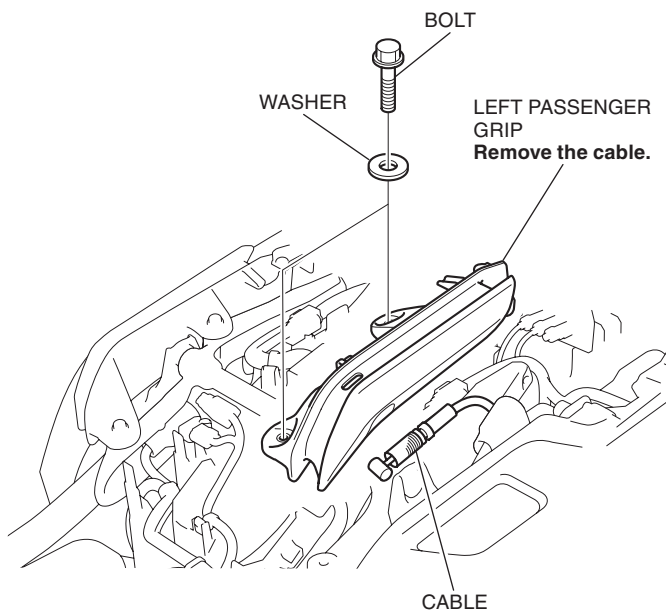
11. Remove the parts as shown.



12. Remove the center rear top cover as shown.

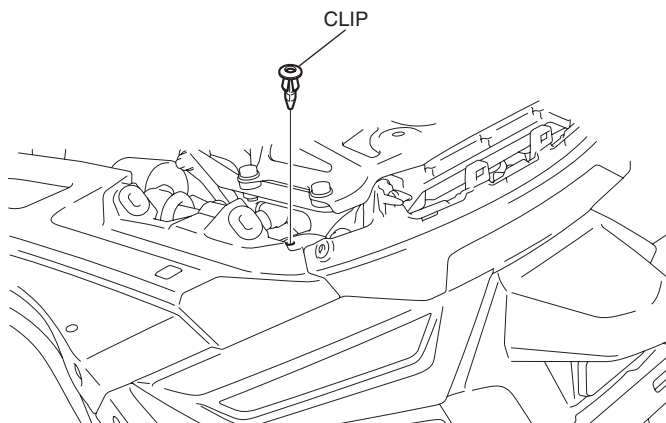


13. Remove the left passenger grip as shown.

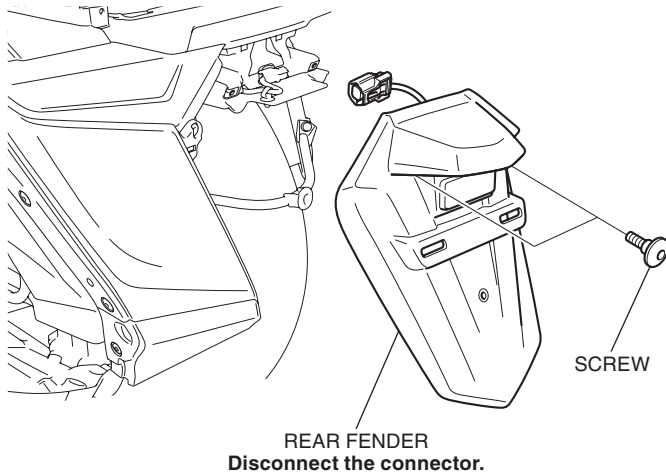


14. Remove the clips as shown.

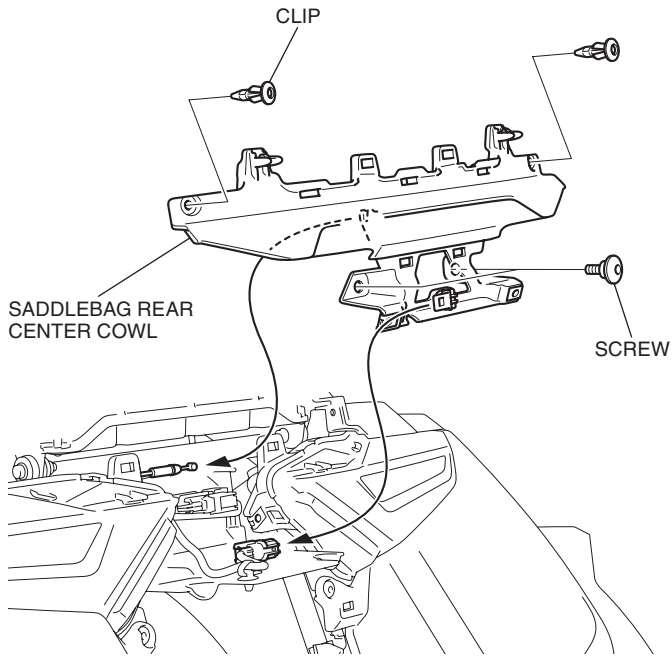
<Left side>



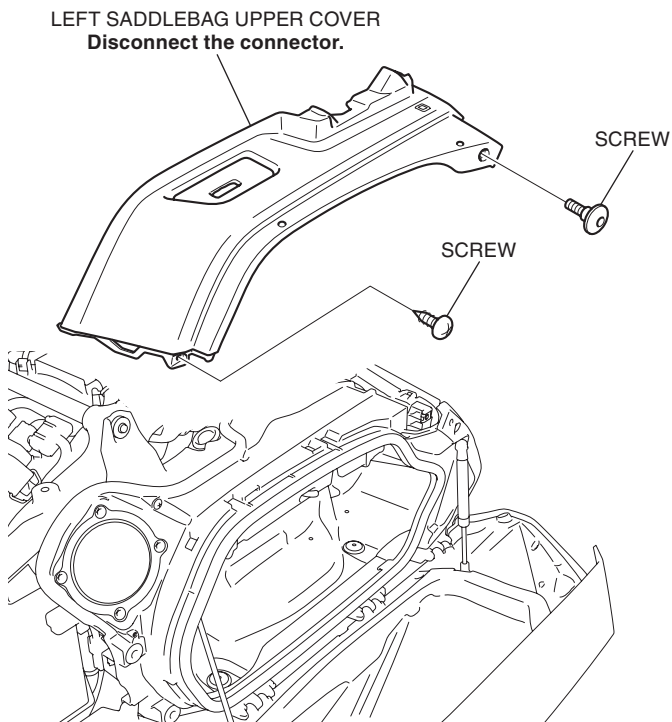
15. Remove the rear fender as shown.



16. Remove the saddlebag rear center cowl as shown.

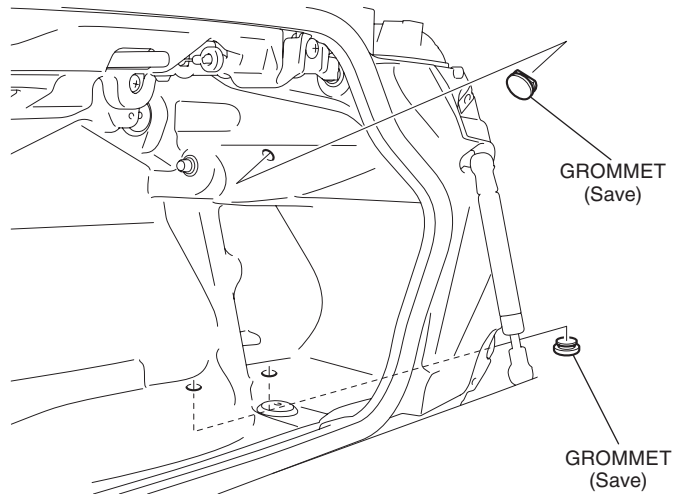


17. Remove the left saddlebag upper cover as shown.
<Left side>

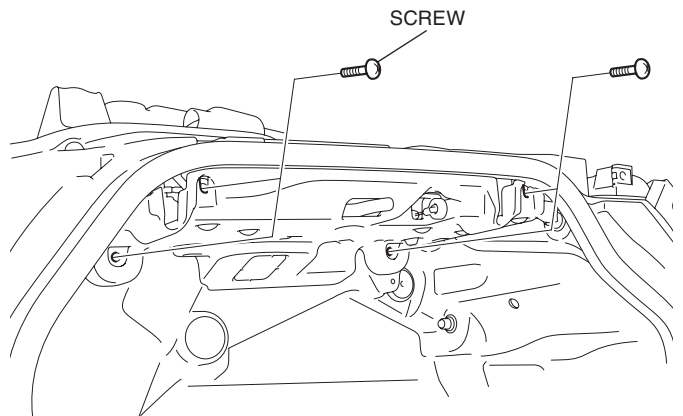


18. Remove the grommets as shown.

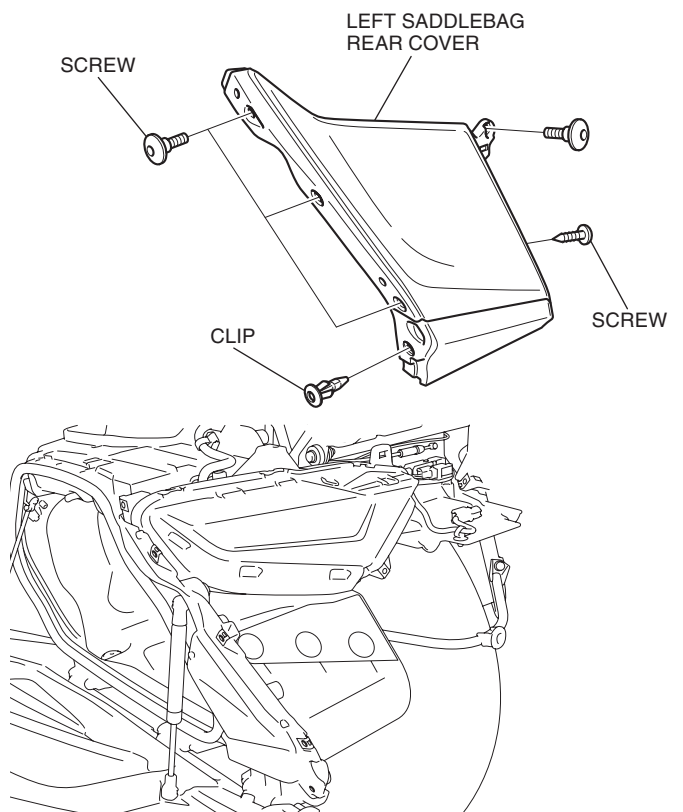
<Left side>



19. Remove the screws as shown.

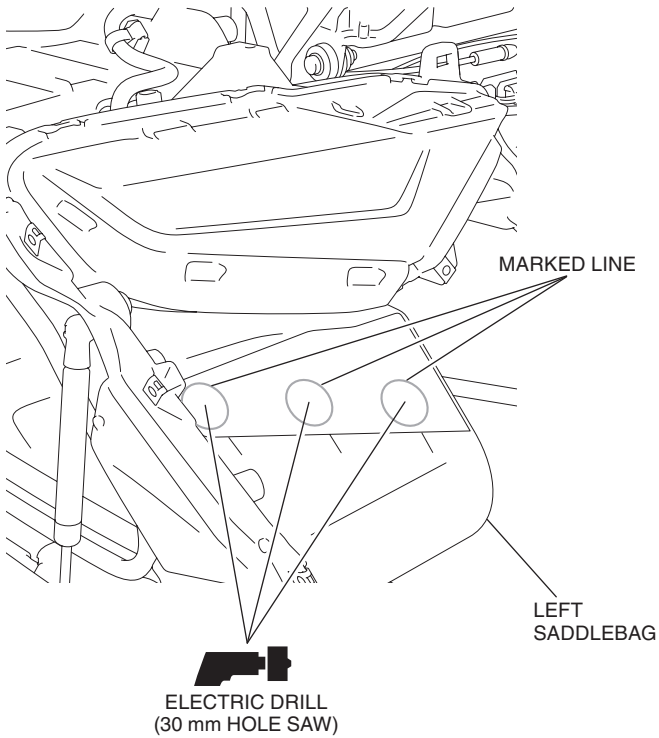


20. Remove the left saddlebag rear cover as shown.



21. Drill at the marked lines of the left saddlebag as shown.

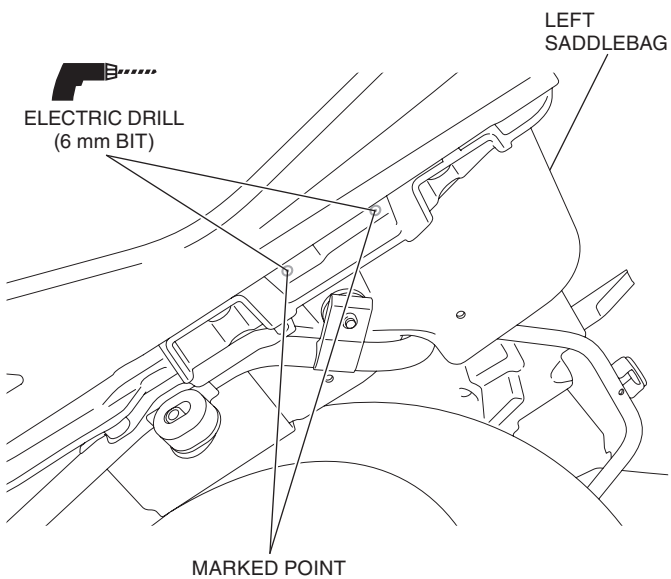
- Drill holes at the center of the marked lines.
- Remove the any burrs from the edge of the hole.



22. Drill at the marked points of the left saddlebag as shown.

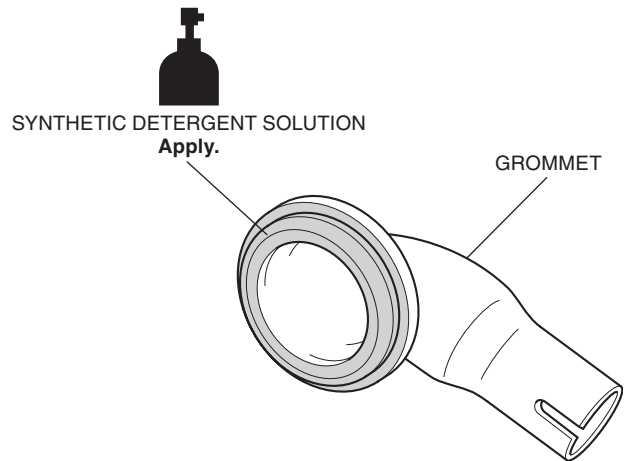
- Remove the any burrs from the edge of the hole.

<Under side>

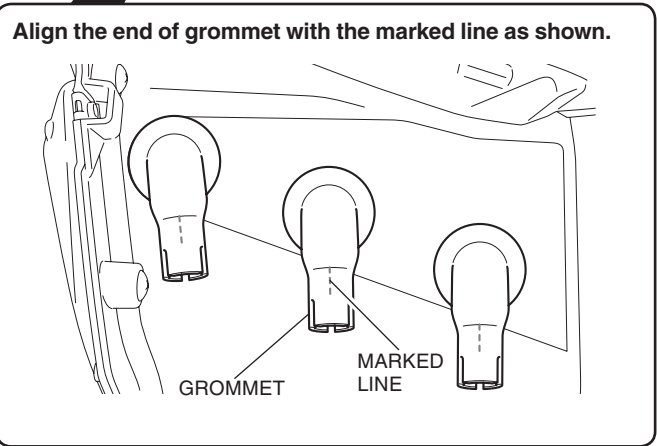
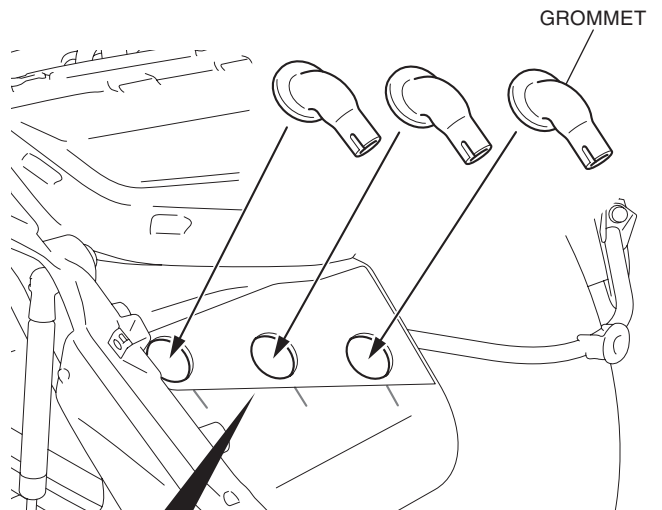


23. Apply synthetic detergent solution to the position shown.

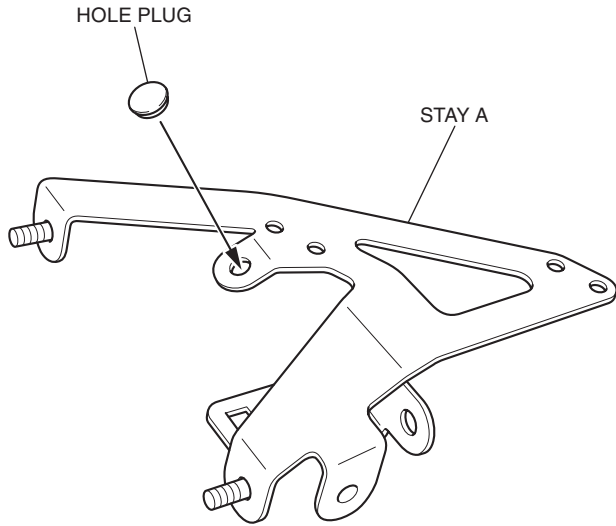
- Perform this step for all three grommets.



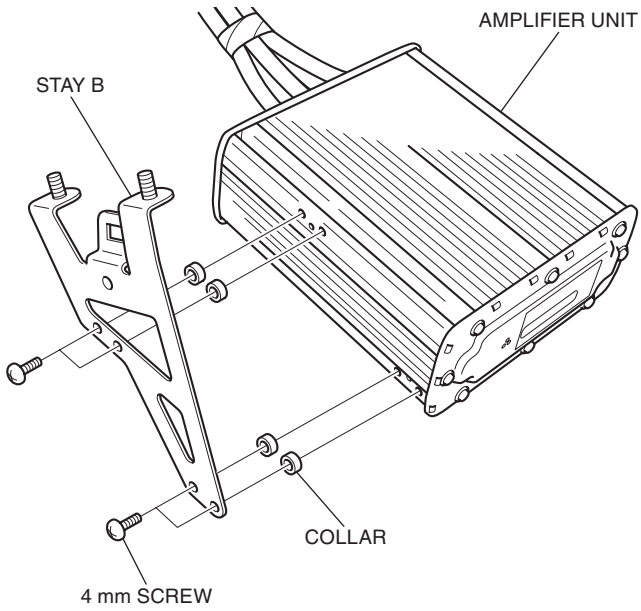
24. Install the grommets as shown.



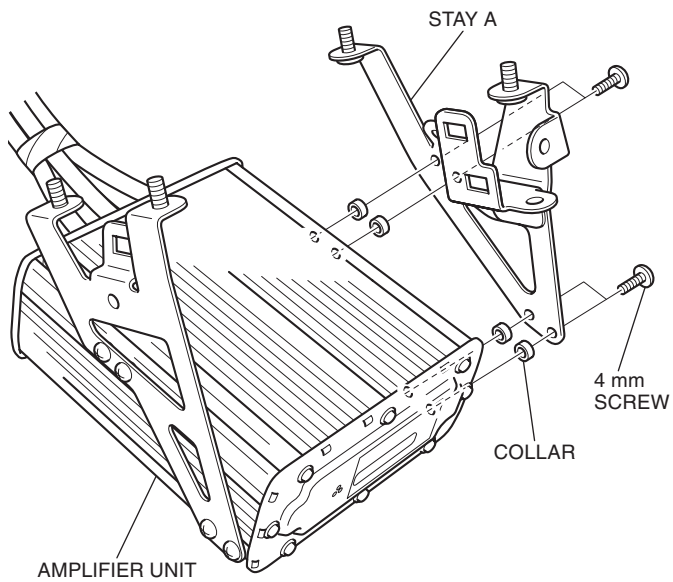
25. Install the hole plug as shown.



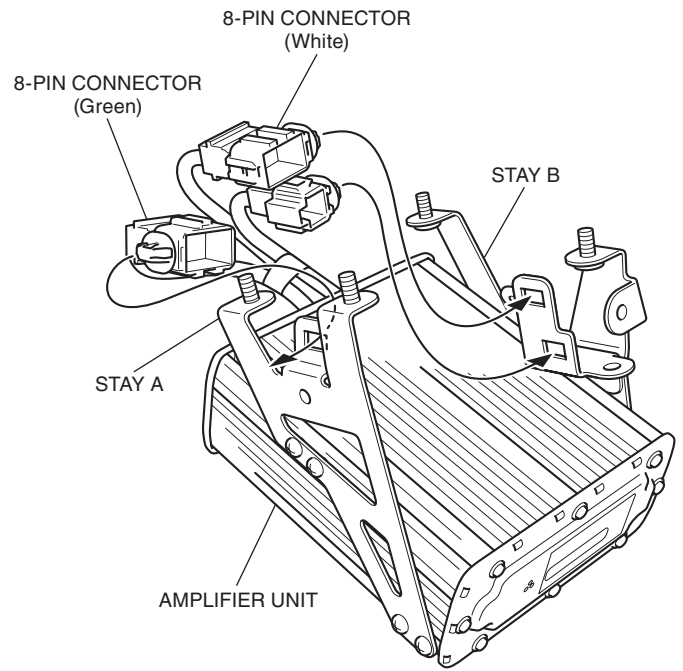
26. Install the stay B as shown.



27. Install the stay A as shown.

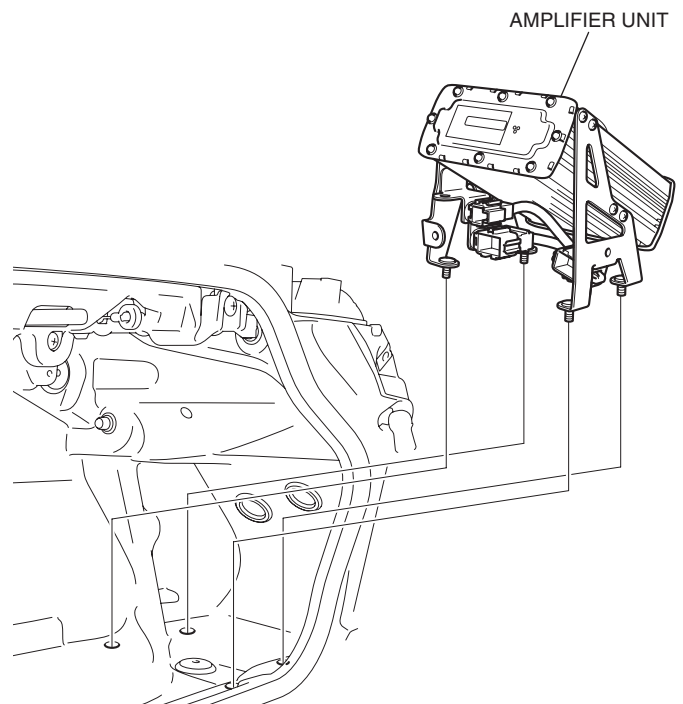


28. Secure the connectors as shown.



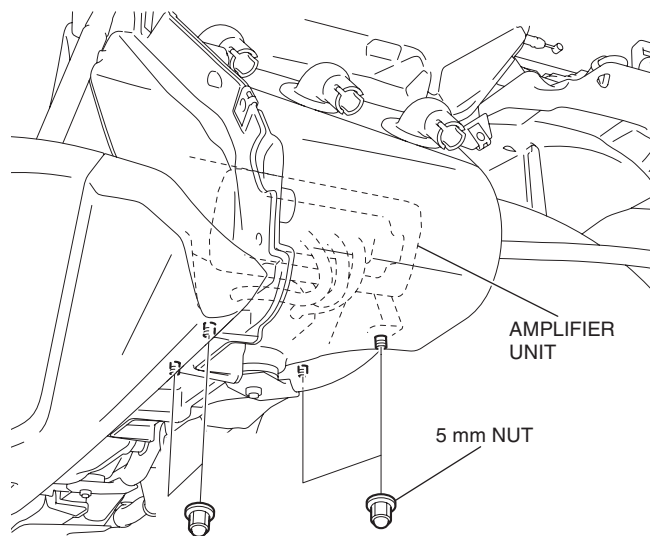
29. Install the amplifier unit as shown.

<Left side>



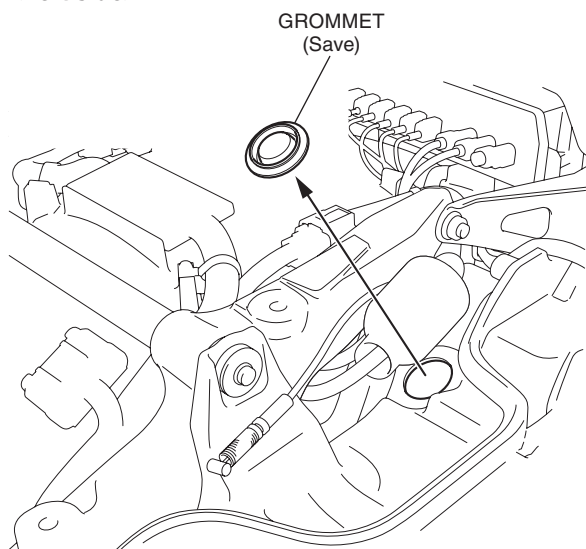
30. Install the 5 mm nuts as shown.

<Left side>

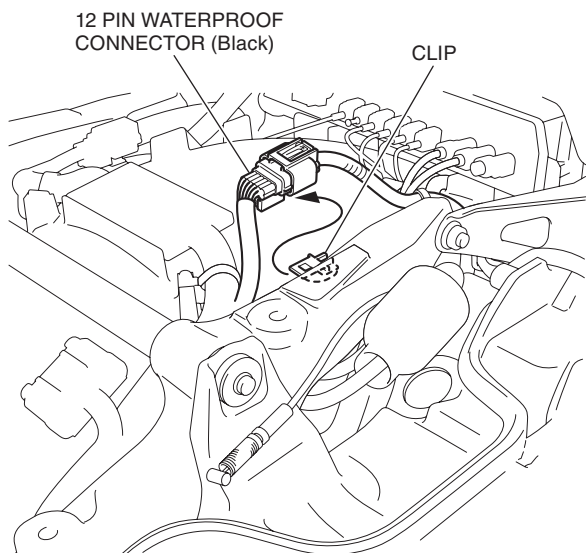


31. Remove the grommet as shown.

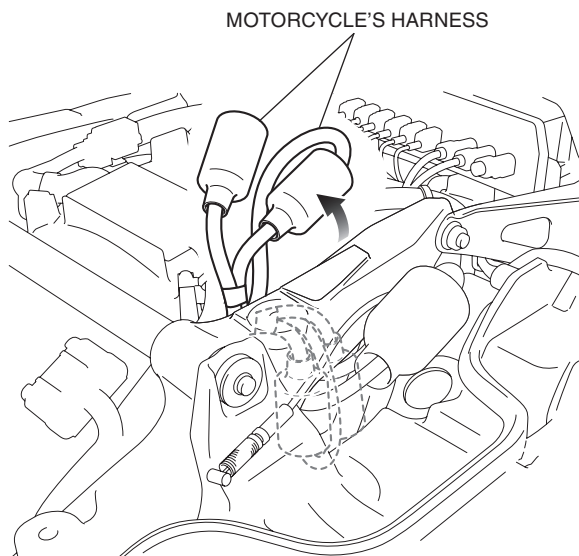
<Left side>



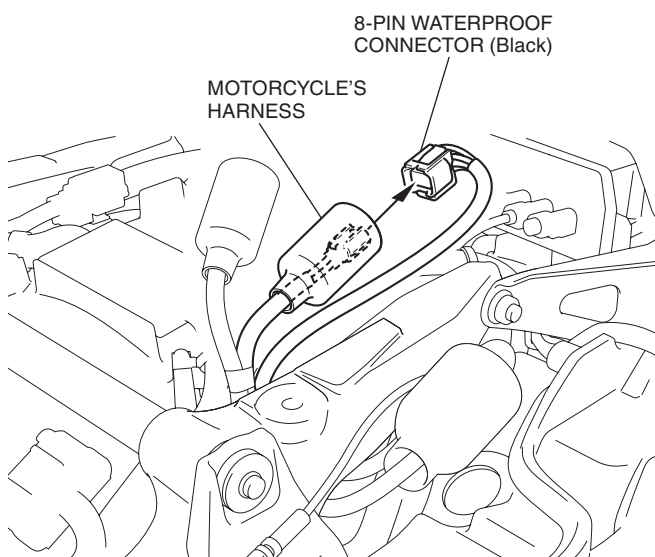
32. Remove the connector as shown.



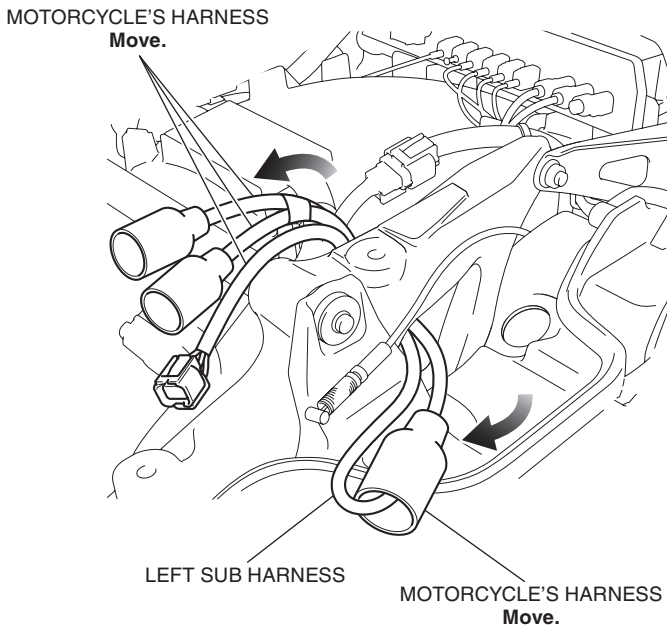
33. Move the motorcycle's harnesses as shown.



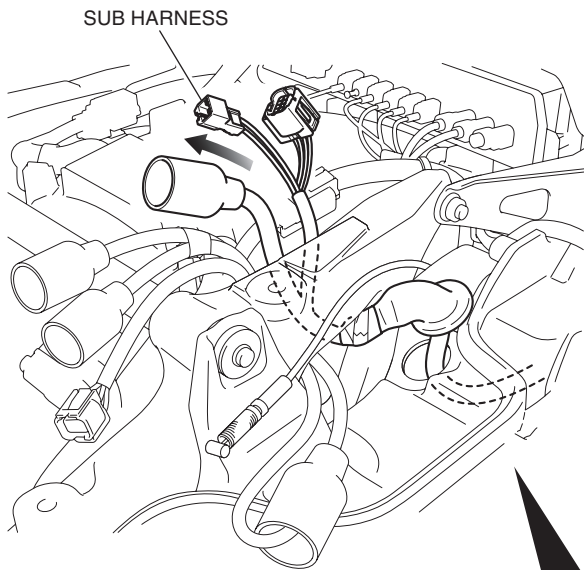
34. Disconnect the connector as shown.



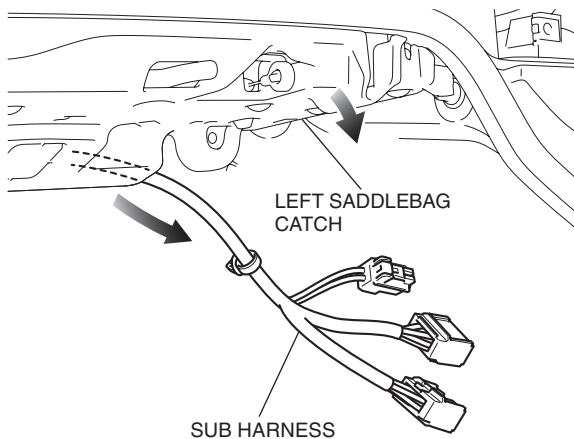
35. Move the motorcycle's harnesses as shown.



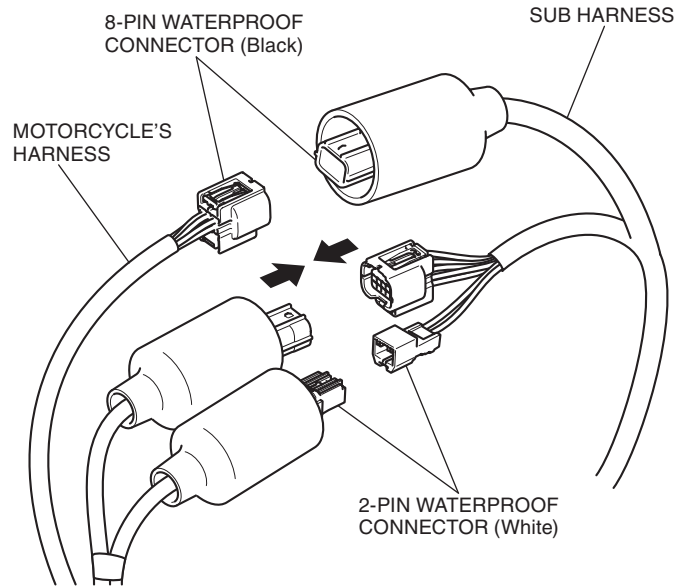
36. Route the sub harness as shown.



Move the left saddlebag catch and route the sub harness as shown.

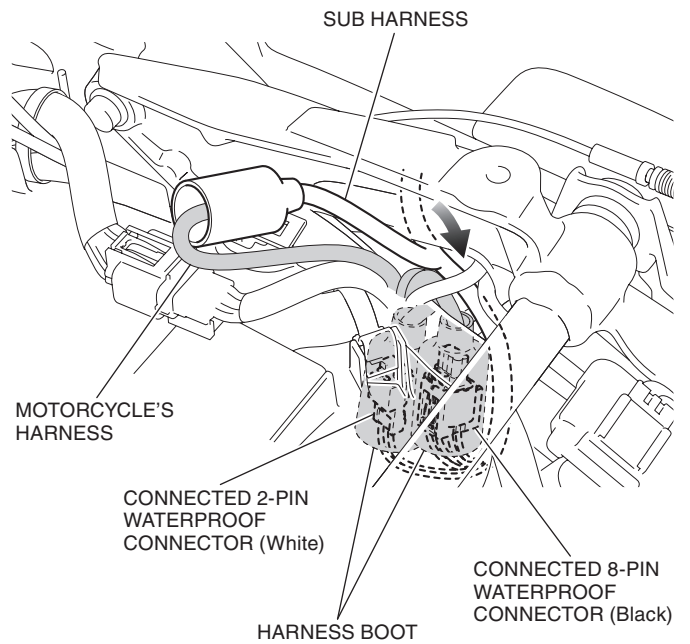


37. Connect the sub harness as shown.

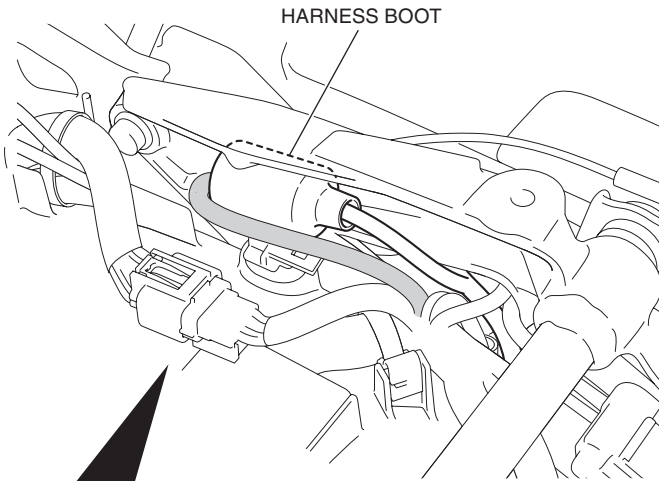


38. Store the harness boots as shown.

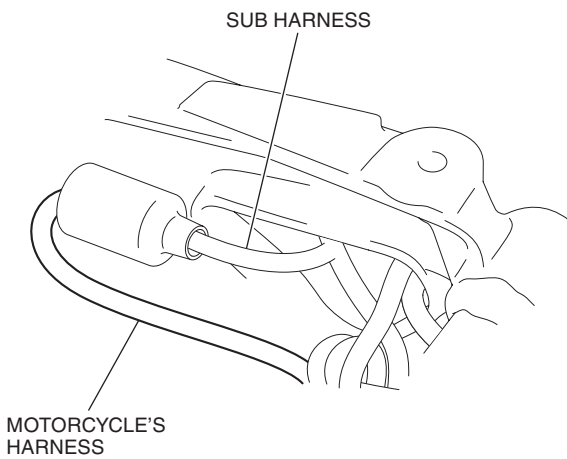
<Left side>



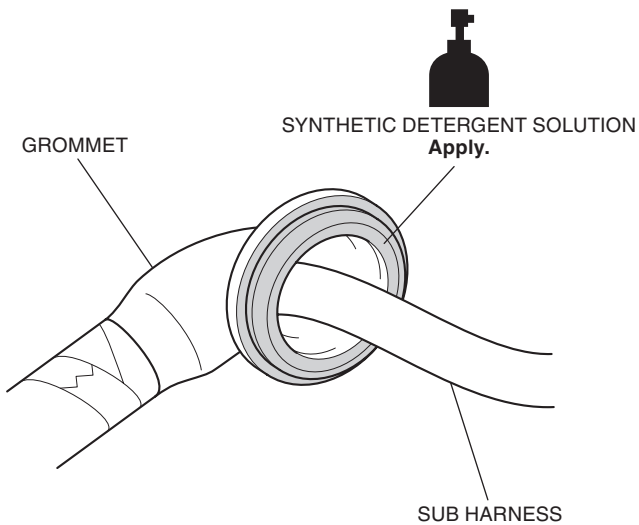
39. Store the boot as shown.



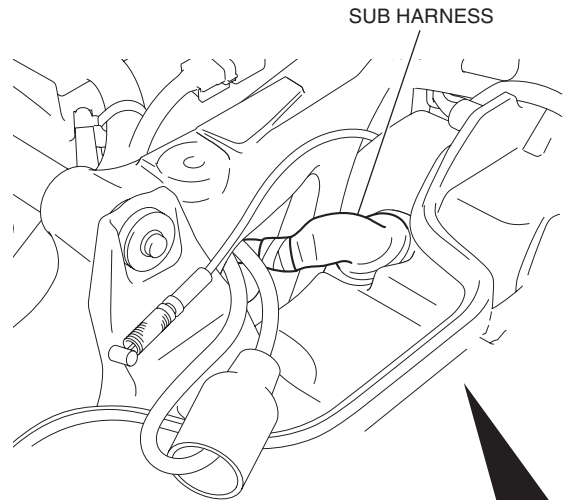
Fold back the motorcycle's harness as shown.



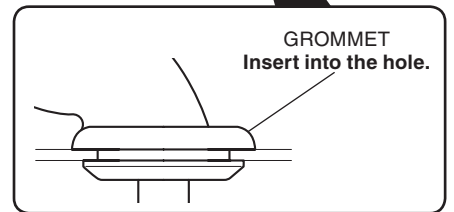
40. Apply synthetic detergent solution to the position shown.



41. Install the sub harness as shown.

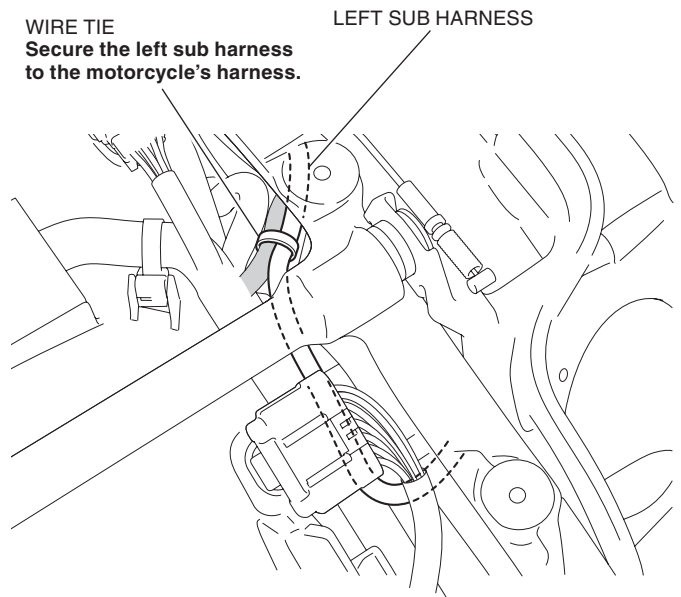


GROMMET
Insert into the hole.



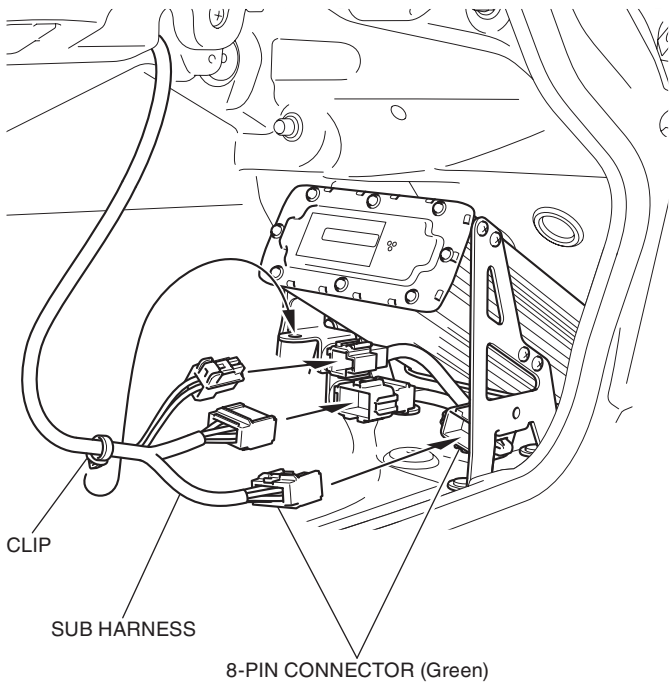
42. Secure the left sub harness with the wire tie as shown.

WIRE TIE
Secure the left sub harness to the motorcycle's harness.

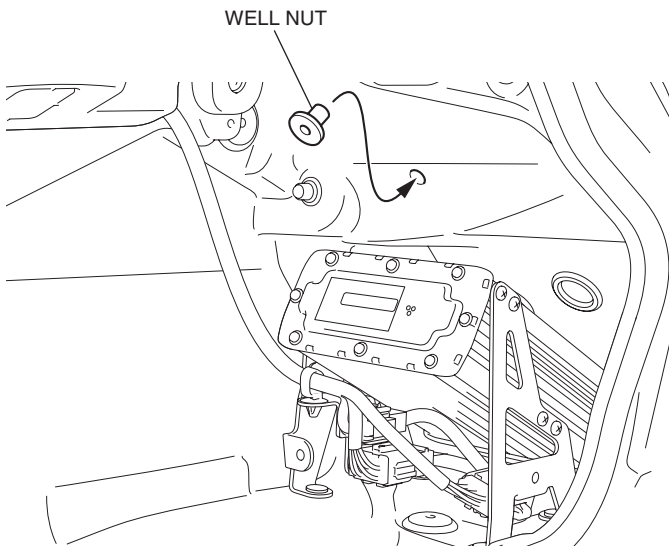


43. Install the left saddlebag catch in the reverse order of removal.

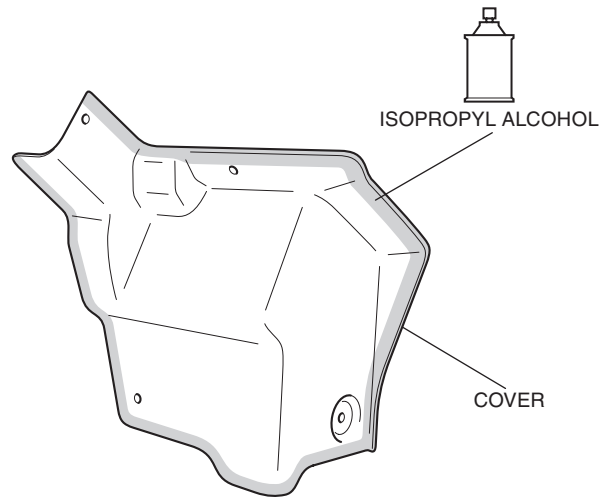
44. Connect the sub harness and install the clip as shown.



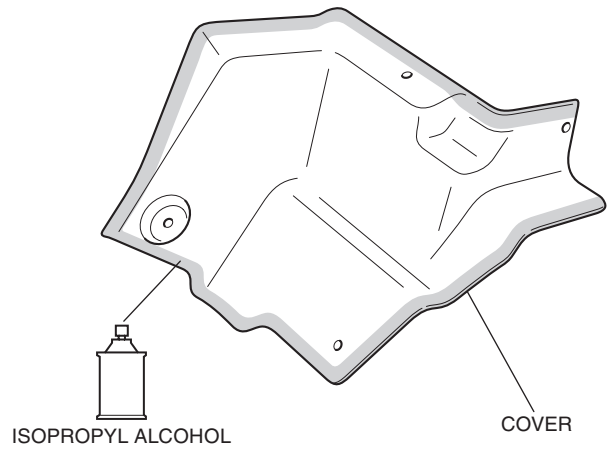
45. Install the well nut as shown.



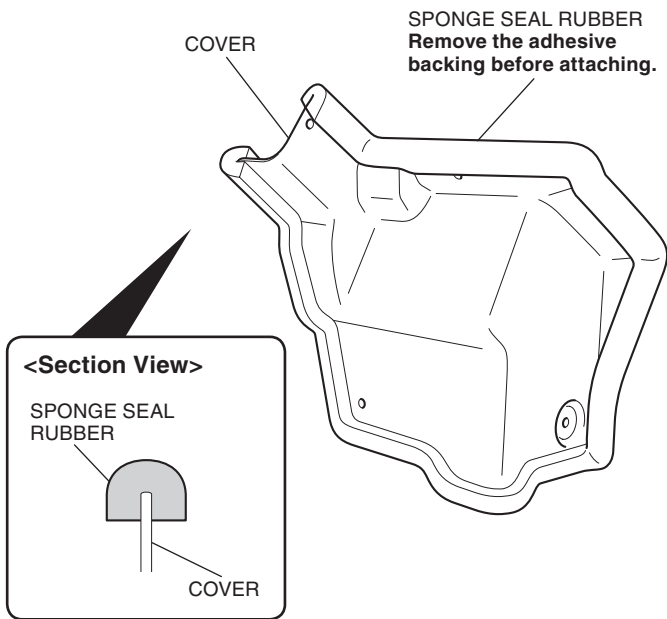
46. Clean the surface of the area shown using an isopropyl alcohol.



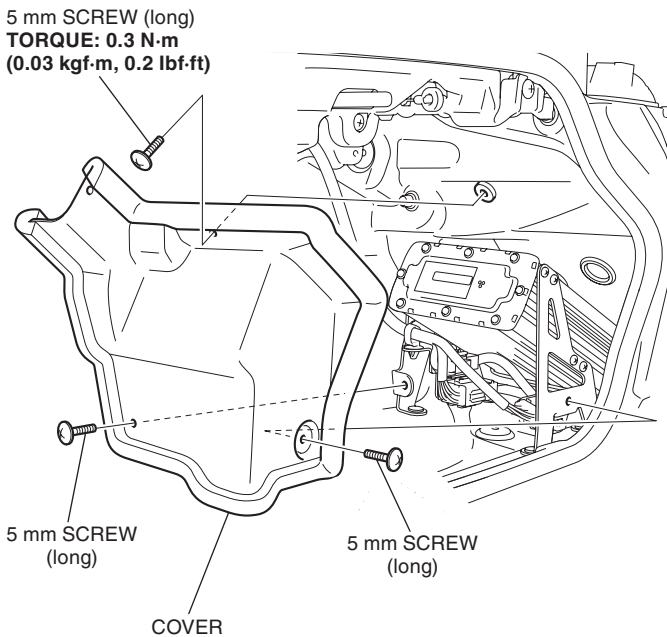
<Backside>



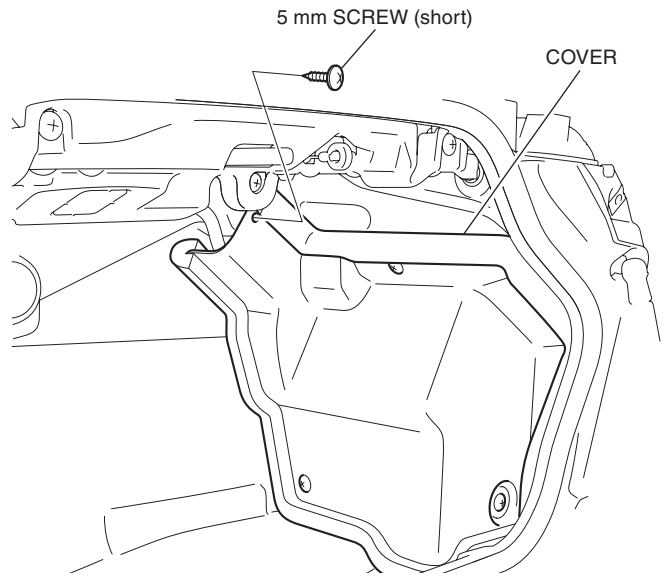
47. Attach the sponge seal rubber as shown.
- **Trim the excess end off the sponge seal rubber.**



48. Install the cover as shown.
- **Confirm that any wire harness is not caught or too tight.**



49. Install the 5 mm screw as shown.



50. Install the motorcycle's parts in the reverse order of removal.
- **Confirm that any wire harness is not caught or too tight.**
51. Check the power amplifier, speaker, headlight and the other lights for proper operation.