



INSTALLATION INSTRUCTIONS

Accessory

REAR CARRIER
P/N 08L70-MKW-D00

Application

NC750XA/XD

Publication No.

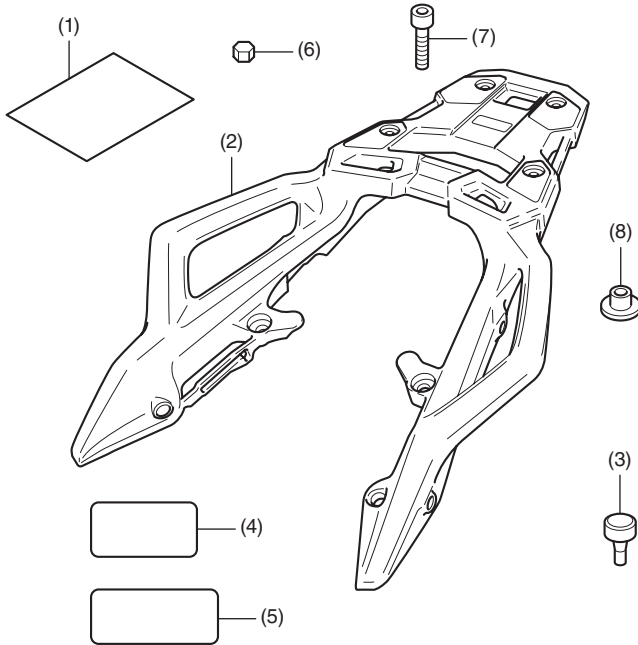
MII

Issue Date

January 2021

Honda Dealer: Please give a copy of these instructions to your customer.

PARTS LIST



No.	Description	Qty
(1)	URL paper	1
(2)	Rear carrier	1
(3)	Stopper rubber	4
(4)	Label (08L42-MGE-800-G1)	1
(5)	Label (KFG-900) (Not used.)	1
(6)	Plug	4
(7)	8 mm socket bolt	2
(8)	Flange collar	2

TOOLS AND SUPPLIES REQUIRED

Hex wrench (6 mm)
Isopropyl alcohol
Shop towel
Torque wrench

TORQUE CHART

Tighten all screws, bolts, and nuts to their specified torque values. Refer to the Service Manual for the torque values of the removed parts.

Item	N·m	kgf·m	lbf·ft
8 mm socket bolt	27	2.8	20

MAXIMUM LOADING CAPACITY

- The weight of the cargo must not exceed the following maximum loading capacity:

Maximum Loading Capacity	
Rear carrier	10 kg (22 lb)

INSTALLATION

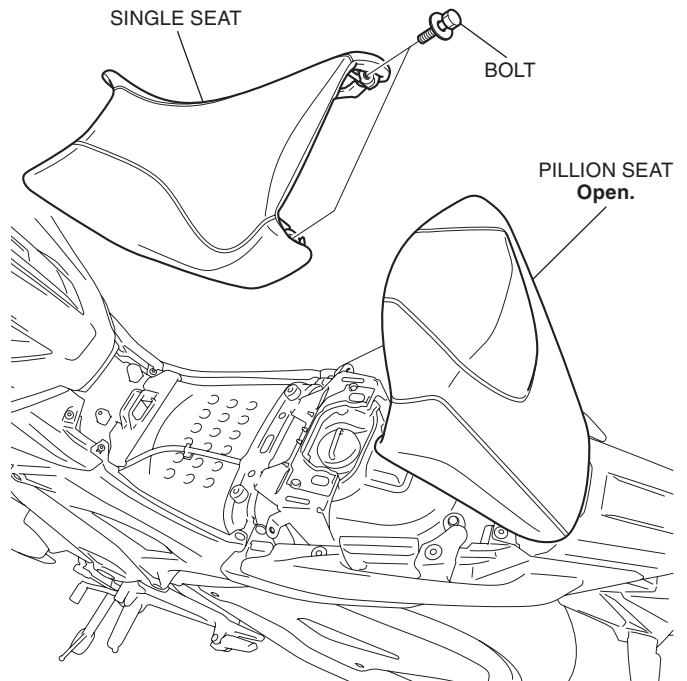
▲ CAUTION

- To prevent burns, allow the engine, exhaust system, radiator, etc., to cool before installing the accessory.

NOTE:

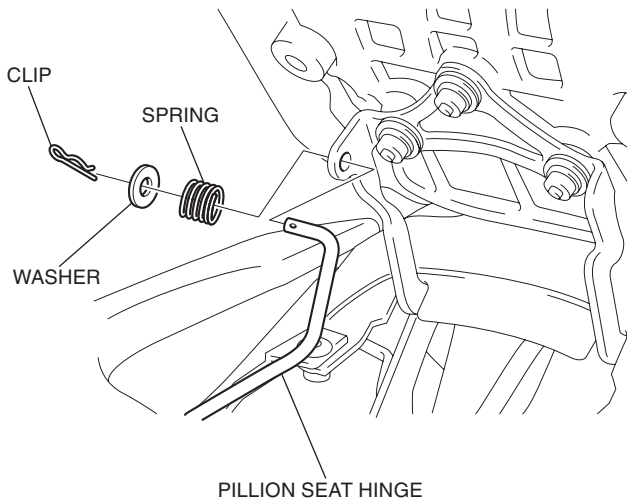
- Heat the bonding surfaces with a hair dryer if the ambient air temperature is below 70°F (21°C).
- The adhesive reaches full strength in 72 hours. Wait at least 24 hours before riding your motorcycle.

- Open the pillion seat and remove the single seat as shown.



2. Remove the parts as shown.

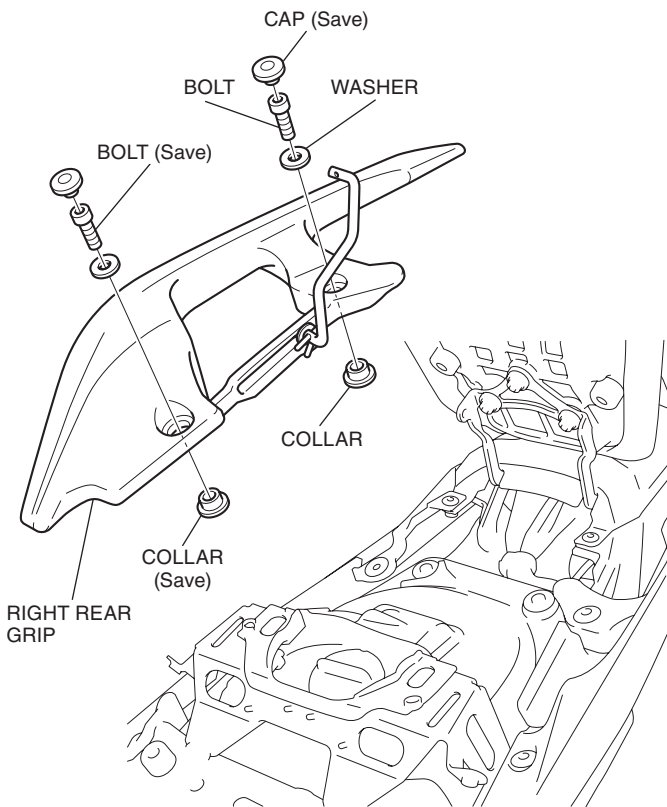
<Right side>



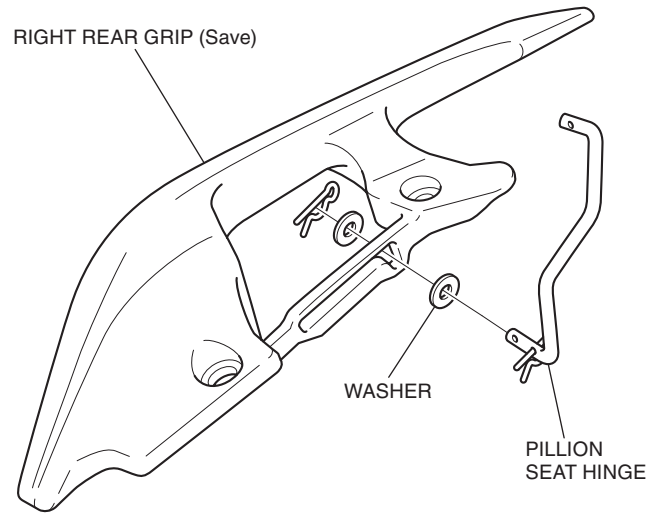
3. Remove the right rear grip as shown.

• Repeat on the left side.

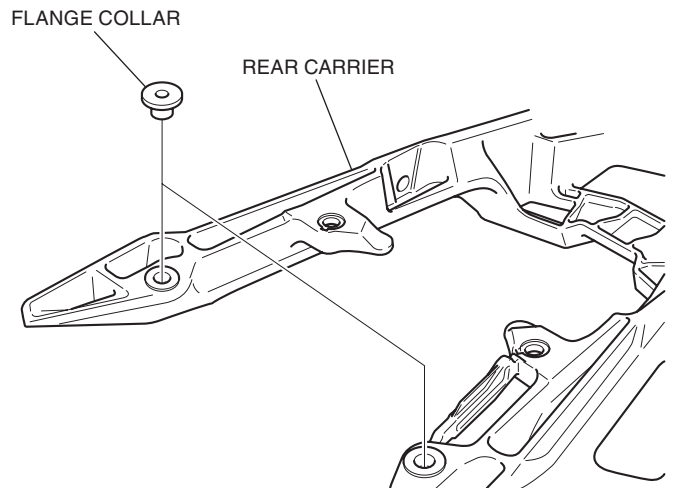
<Right side>



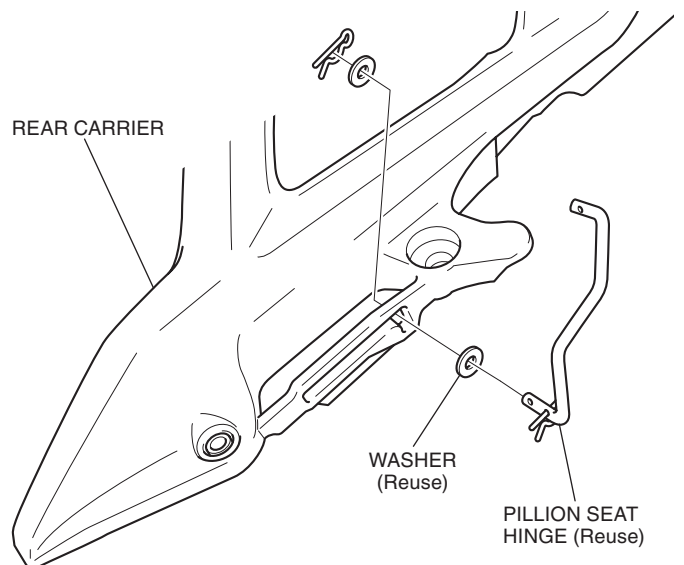
4. Remove the pillion seat hinge as shown.



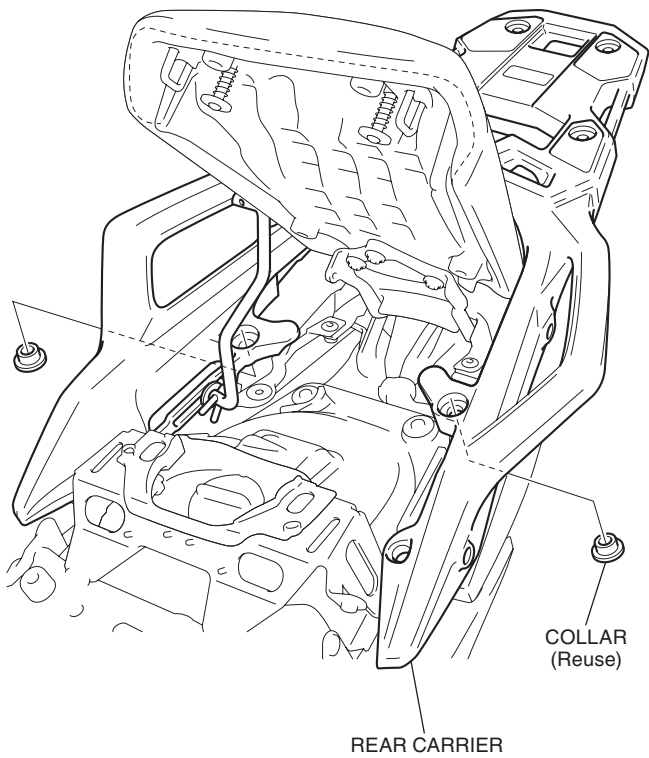
5. Install the flange collars as shown.



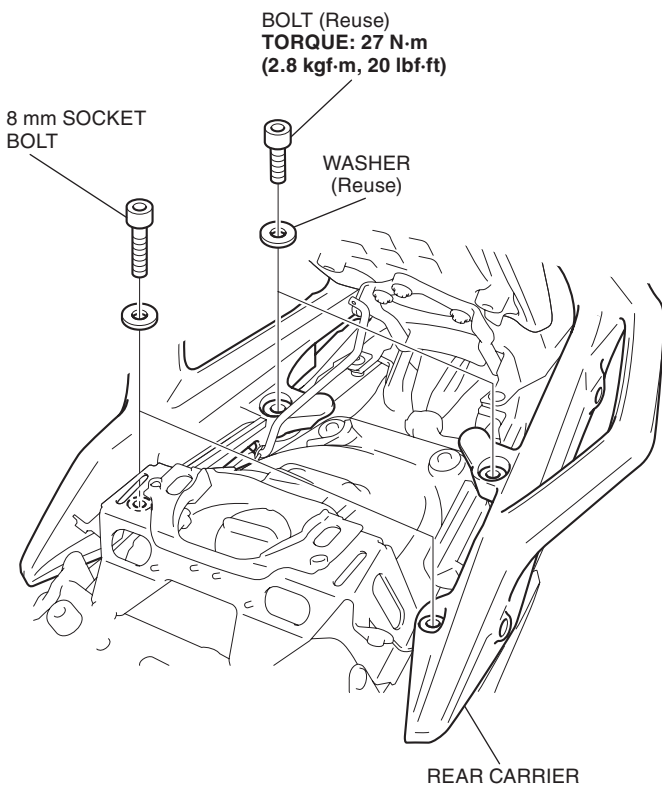
6. Install the pillion seat hinge as shown.



7. Place the rear carrier and install the collars as shown.



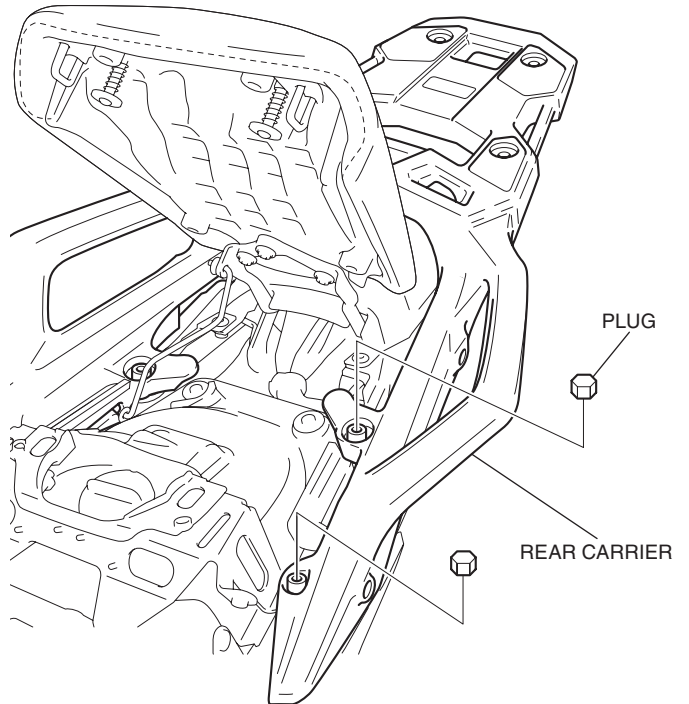
8. Install the rear carrier as shown.



9. Install the pillion seat hinge to the pillion seat in the reverse order of removal.

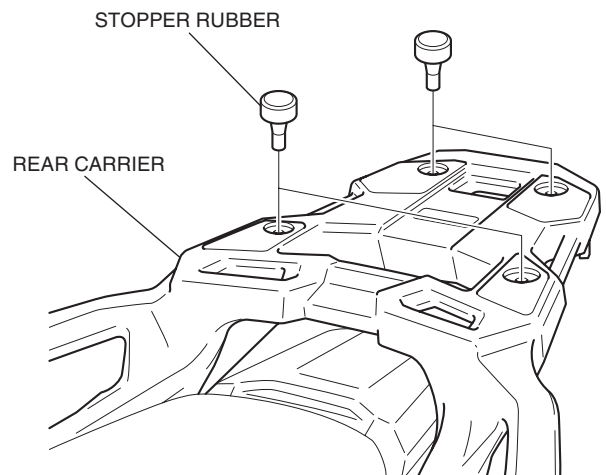
10. Install the plugs as shown.
 • Repeat on the right side.

<Left side>

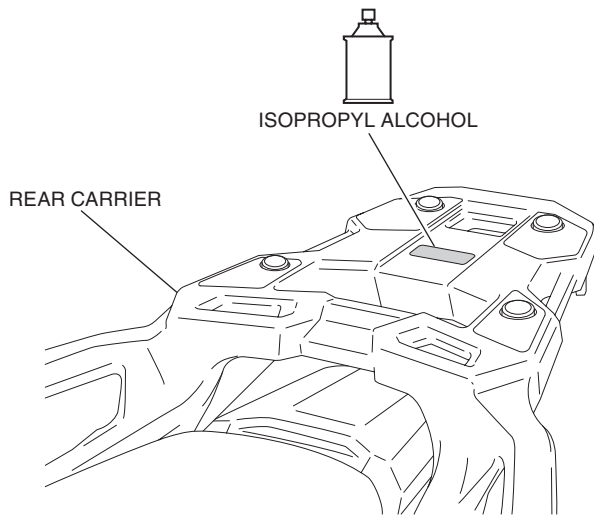


11. Install the single seat in the reverse order of removal.

12. Install the stopper rubbers as shown.



13. Clean the surface of the area shown using an isopropyl alcohol.



14. Attach the label as shown.

